

AMERICAN  
**PSYCHIATRIC**  
ASSOCIATION



# **IPS:** THE MENTAL HEALTH SERVICES CONFERENCE

October 4-7, 2018 • Chicago



## Guide

[psychiatry.org/ips](http://psychiatry.org/ips) | Palmer House Hilton Hotel | #IPSchicago

*Current as of September 12, 2018. Program content is subject to change.*



Ⓡ  
TOW ZONE

# Welcome Letter From the President



## Dear APA Members and Guests,

Welcome to the American Psychiatric Association's IPS: The Mental Health Services Conference in Chicago. This year's meeting is focused on the theme:

*Reimagining Psychiatry's Impact on Health Equity.* Our theme was chosen to highlight educational programs and innovations in clinical services designed to ensure equal access to high-quality mental health care – also known as health equity – to all populations regardless of race/ethnicity, age, religion, nationality, sexual orientation, gender identity, socioeconomic status, or geographical background.

Health equity must be addressed at multiple levels, including practice settings and educational activities for trainees, practicing psychiatrists, organizations and institutions. This year's IPS is built around a highly diverse, interactive program designed to address health inequity issues and their solutions at different levels for the various groups. Some of the sessions are dedicated to prominent issues of the day, such as reducing stigma in communities of color, cultural competency/cultural diversity training, dismantling structural/institutional racism, addressing mental health disparities, and services for better meeting the needs of transgender service members.

You'll also find a number of other topics that have helped make this the go-to meeting to interact with experts on the latest clinical information. APA's Division of Education has organized this content into tracks that make it easy for you to make the most of your time, including Addiction Psychiatry, Administrative Psychiatry, Community Psychiatry, Integrated and Collaborative Care, Psychopharmacology, and Technology (including telepsychiatry and mental health apps). The Physician Wellness track will provide useful strategies for combatting burnout and enhancing physicians' own mental and physical well-being.

This year, the sessions available through the APA Learning Lab were designed with that same goal in mind. Ethics in Real Time: Learning Through Simulation will challenge participants' perceptions of social determinants of mental health, moral decision making, and other factors that contribute to the complex ethics of psychiatric practice. Microaggressions, Macroeffects: Navigating Power and Privilege in Psychiatry will help attendees understand power, privilege and microaggressions that occur daily in our classrooms, offices, and clinics. I'm very excited to see what these sessions and the other Learning Labs have to offer.

One of the outstanding features of IPS is how accessible the presenters are and how inspiring it is to hear about the great work being done in communities by medical leaders who are also psychiatrists. I encourage you to take the chance to really get to know these colleagues, exchange knowledge and ideas, and forge lasting relationships. I would like to extend a special thank you to the diverse and committed scientific program committee for this meeting led by Drs. Glenda L. Wrenn and Ruth S. Shim. Program committee members can be identified by the red ribbon on their badges, so say hello and thanks if you see them. And don't forget to complete the evaluation; we take your feedback seriously and use it to keep making this program better!

I hope you enjoy your time in Chicago, and I look forward to getting an opportunity to meet and join you in learning the latest about what each of us can do to ensure mental health equity in the treatment of all patients.

A handwritten signature in black ink, reading "Altha J. Stewart, M.D." The signature is fluid and cursive, with a long, sweeping underline.

Altha J. Stewart, M.D.  
President, American Psychiatric Association

# Welcome Letter

## From the Scientific Program Committee Chair



### Dear Colleagues and Guests,

It is my extreme pleasure to welcome you to the Windy City and the 2018 IPS: The Mental Health Services Conference. Dr. Altha J. Stewart, Dr. Ruth S. Shim, and I have built this year's program around the theme

*Reimagining Psychiatry's Impact on Health Equity.*

The Scientific Planning Committee evaluated a record number of submissions to create an exciting, high-quality program with a lot of great content to share with you over the next few days.

This year, we have more in-depth courses to offer on a diverse range of topics, including marijuana and mental health, emergency psychiatry, and the popular Psychiatry Review and Clinical Synthesis, back for its second year. Be sure to register in advance for the courses that interest you. Space is limited!

In addition to our paid courses, you will find lectures, workshops, symposia, forums, and more in a program designed to tackle the pressing issues in clinical care, including resilience and burnout, best practices for caring for diverse patients, advocacy skills for psychiatrists, mental health and the criminal justice system, transgender mental health, and much more.

Don't forget to check out the interactive Learning Lab, where you'll have the opportunity to interact with colleagues through simulation, improvisation, theater, and group discussions. This experiential learning format is tailored to provide you with new viewpoints and new insights into various critical aspects of our profession.

Finally, while you are here be sure to set aside time to experience Chicago's legendary hospitality. Visit the city's green spaces—Millennium Park and the scenic Riverwalk—or for the city folk among us, experience the architecture of Chicago's iconic skyline. Chicago is home to a vibrant culture of art and theater, so check out the lakeshore Museum Campus right next to Grant Park or a concert at the Chicago Symphony Orchestra. And of course there will be plenty of food, like Chicago's famous deep dish pizza.

As Chair of the Scientific Program Committee, I am excited for this year's IPS conference, and I look forward to seeing each of you at the Palmer House.

Kind Regards,

A handwritten signature in black ink that reads "Glenda Wrenn". The signature is fluid and cursive.

Glenda L. Wrenn, M.D., MSHP  
Chair, Scientific Program Committee

# Table of Contents

## Attendee Services

Schedule at a Glance.....	7
Program Highlights.....	8
General Information.....	10
Hotel Maps.....	13

## Education

Continuing Medical Education.....	15
Daily Attendance Log.....	17
Special Session Highlights.....	19
Learning Labs.....	20
Disclosure Index.....	21
Program Format Descriptions.....	29
Scientific Program.....	30
Thursday, October 4.....	31
Friday, October 5.....	37
Saturday, October 6.....	43
Sunday, October 7.....	48

## Education (continued)

Poster Sessions.....	51
Poster Session Topic Index.....	57
Allied Professional Meetings.....	59
APA Component Meetings.....	60

## Exhibits

Exhibit Hall Highlights.....	61
Exhibitor Listings.....	63
Exhibit Hall Map.....	68

## Mission Statement

The mission of IPS: The Mental Health Services Conference is to train and support psychiatrists and other mental health professionals to provide quality care and leadership. Its goal is to ensure optimal care and hope of recovery for individuals who suffer from mental illness, substance abuse or other difficulties through the study of clinical innovations and services to better meet their needs.



# Welcome

The Scientific Program Committee and APA Leadership  
Welcome You to Chicago!

## Members, Consultants, Liaisons, Corresponding Members

**Altha J. Stewart, M.D.**  
*APA President*

**Saul Levin, M.D., M.P.A.**  
*CEO and Medical Director*

**Glenda L. Wrenn, M.D.**  
*Chair*

**Ruth S. Shim, M.D., M.P.H.**  
*Vice Chair*

**Margaret Balfour, M.D., Ph.D.**  
**Curley L. Bonds, M.D.**

**Michael A. Flaum, M.D.**  
**Mary T. Gabriel, M.D.**

**Lawrence Malak, M.D.**  
**Ralph De Similien, M.D.**

**Sarah Y. Vinson, M.D.**  
**Eric Yarbrough, M.D.**  
*Members*

**Charlotte N. Hutton, M.D.**  
*Corresponding Member*

**Robert O. Cotes, M.D.**  
**Susan V. McLeer, M.D.**  
*Consultants*

**Nichole I. Goodsmith,  
M.D., Ph.D.**  
*Liaison, Public  
Psychiatry Fellowship*

**Jacqueline M. Feldman, M.D.**  
*Liaison, Annual Meeting  
Scientific Program Committee*

## APA Board of Trustees and Administration

### 2018-2019 APA Officers

**Altha J. Stewart, M.D.**  
*President*

**Bruce J. Schwartz, M.D.**  
*President-Elect*

**Philip R. Muskin, M.D., M.A.**  
*Secretary*

**Gregory W. Dalack, M.D.**  
*Treasurer*

**James Robert  
Batterson, M.D.**  
*Speaker of the Assembly*

### Office of the CEO and Medical Director

**Saul Levin, M.D., M.P.A.**  
*CEO and Medical Director*  
slevin@psych.org

**Tanya Bradsher**  
*Chief Communications  
Officer*  
tbradsher@psych.org

### Division of Education

**Tristan Gorrindo, M.D.**  
*Director*

**Nina Taylor, M.A.**  
*Deputy Director*

**Kristen Moeller**  
*Director,  
Office of Continuing  
Medical Education*

### Office of Scientific Programs

program@psych.org  
202-549-9279

**Leon Lewis**  
*Director, Office of  
Scientific Programs*

**Austin DeMarco**  
*Project Manager,  
Office of Scientific  
Programs*

**Tiffany McCoy**  
*Education Coordinator,  
Office of Scientific  
Programs*

### Meetings and Convention Department

**Paula Schneider**  
*Director*  
pschneider@psych.org

**Cristina Adames**  
*Senior Meeting Planner*  
cadames@psych.org

**Traci Williams**  
*Senior Meeting Planner*  
twilliams@psych.org

**Jamie Woodside, CEM**  
*Exhibits and  
Meetings Manager*  
jwoodside@psych.org

# Schedule at a Glance

<b>WEDNESDAY, OCTOBER 3, 2018</b>		
3:30 p.m. – 5:00 p.m.	Registration Open (APA Members Only)	Exhibit Hall, Fourth Floor
<b>THURSDAY, OCTOBER 4, 2018</b>		
7:30 a.m. – 5:00 p.m.	Onsite Check-In and Registration	Exhibit Hall, Fourth Floor
7:30 a.m. – 5:30 p.m.	Education Center	Salon Foyer, Third Floor
8:00 a.m. – 5:00 p.m.	Educational Sessions and Posters	Lobby Level, Third Floor, Fourth Floor, Sixth Floor
3:00 p.m. – 4:00 p.m.	Opening Session and Awards Ceremony, Featuring APA CEO and Medical Director Saul Levin, M.D., M.P.A., APA President Altha J. Stewart, M.D., SPC Chair Glenda Wrenn, M.D., M.S.H.P., Illinois Psychiatric Society Executive Director Meryl Camin Sosa, Esq., and Opening Session Presenter, Camara Phyllis Jones, M.D., M.P.H., Ph.D.	Empire, Lobby Level
3:30 p.m. – 5:30 p.m.	Exhibit Hall Open (Welcome Reception 4:00 p.m. to 5:30 p.m.)	Exhibit Hall, Fourth Floor
<b>FRIDAY, OCTOBER 5, 2018</b>		
7:30 a.m. – 5:00 p.m.	Onsite Check-In and Registration	Exhibit Hall, Fourth Floor
7:30 a.m. – 5:30 p.m.	Education Center	Salon Foyer, Third Floor
8:00 a.m. – 5:00 p.m.	Educational Sessions and Posters	Lobby Level, Third Floor, Fourth Floor, Sixth Floor
10:30 a.m. – 5:00 p.m.	Exhibit Hall Open	Exhibit Hall, Fourth Floor
11:30 a.m. – 1:00 p.m.	Lunch with Exhibitors	Exhibit Hall, Fourth Floor
7:00 p.m. – 9:00 p.m.	American Association of Community Psychiatrists Membership Reception for All Attendees	Pritzker Military Museum & Library 104 S. Michigan Avenue Second Floor
<b>SATURDAY, OCTOBER 6, 2018</b>		
7:30 a.m. – 5:00 p.m.	Onsite Check-In and Registration	Exhibit Hall, Fourth Floor
7:30 a.m. – 5:30 p.m.	Education Center	Salon Foyer, Third Floor
8:00 a.m. – 5:00 p.m.	Educational Sessions and Posters	Lobby Level, Third Floor, Fourth Floor, Sixth Floor
10:30 a.m. – 12:30 p.m.	Exhibit Hall Open – <i>Last Day</i>	Exhibit Hall, Fourth Floor
11:00 a.m. – 12:30 p.m.	Brunch with Exhibitors	Exhibit Hall, Fourth Floor
<b>SUNDAY, OCTOBER 7, 2018</b>		
7:30 a.m. – 10:30 a.m.	Onsite Check-In and Registration	Exhibit Hall, Fourth Floor
7:30 a.m. – Noon	Education Center	Salon Foyer, Third Floor
8:00 a.m. – 11:30 a.m.	Educational Sessions	Lobby Level, Third Floor
All Day	Exhibit Hall Closed	

# Program Highlights

## THURSDAY, OCTOBER 4, 2018

### LECTURE

#### Transforming the Criminal Justice System in the Cook County State's Attorney Office

8:00 a.m. - 9:30 a.m.

Honore, Lobby Level, Palmer House Hilton

**Chair:** *Glenda Wrenn, M.D., M.S.H.P.*

**Lecturer:** *Kim Foxx, J.D.*

### SYMPOSIA

#### Criminal Justice and Mental Illness: Stepping Up

8:00 a.m. - 11:00 a.m.

Wabash Room, Third Floor, Palmer House Hilton

**Chairs:** *Daniel H. Gillison Jr., Steve Leifman, J.D.*

**Presenters:** *Fred Charles Osher, M.D., Stephanie Le Melle, M.D., M.S., Altha J. Stewart, M.D., Sheriff Thomas Dart*

#### Psychiatry, Health Equity and the Diseases of Despair and Disparity: The Antidotes of Hope, Inclusion and Resilience

8:00 a.m. - 11:00 a.m.

Salon 5/8, Third Floor, Palmer House Hilton

**Chair:** *Kenneth Stewart Thompson, M.D.*

**Presenters:** *Ruth S. Shim, M.D., M.P.H., Ja.m.es La.m.ont Griffith, M.D., Kenneth Stewart Thompson, M.D.*

**Discussants:** *Aidaspahic S. Mihajlovic, M.D., M.S., Michael T. Compton, M.D., M.P.H.*

### WORKSHOP

#### The 3A.m. Phone Call: Advancing Crisis Services into the 21<sup>st</sup> Century

1:00 p.m. - 2:30 p.m.

Salon 12, Third Floor, Palmer House Hilton

**Chair:** *Margaret E. Balfour, M.D., Ph.D.*

**Discussant:** *Kenneth Minkoff, M.D.*

## FRIDAY, OCTOBER 5, 2018

### FORUM

#### Transpeople in the Military: Mental Health Concerns for Active Duty and Veterans and the Impact of Being Allowed to Serve Openly

1:00 p.m. - 2:30 p.m.

Salon 6/7, Third Floor, Palmer House Hilton

**Chairs:** *Amir K. Ahuja, M.D., Eric Yarbrough, M.D.*

**Presenters:** *Shane Ortega, Paula Neira*

## FRIDAY, OCTOBER 5, 2018

### LECTURES

#### From Cultural to Structural Competency: Training Psychiatry Residents to Act on Social Determinants of Health and Institutional Racism

1:00 p.m. - 2:30 p.m.

Wabash Room, Third Floor, Palmer House Hilton

**Chair:** *Helena B. Hansen, M.D., Ph.D.*

**Lecturers:** *Enrico Guanzon Castillo, M.D., Nichole I. Goodsmith, M.D., Ph.D., Isabella Morton, M.D., M.P.H.*

#### The Balancing Act: Women Psychiatrists

1:00 p.m. - 2:30 p.m.

Honore, Lobby Level, Palmer House Hilton

**Chair:** *Carolyn Bauer Robinowitz, M.D.*

**Lecturer:** *Carol Ann Bernstein, M.D.*

### SPECIAL SESSION

#### Integrating Behavioral Health and Primary Care: Practical Skills for the Consulting Psychiatrist

1:00 p.m. - 5:00 p.m.

Salon 5/8, Third Floor, Palmer House Hilton

**Faculty:** *Anna Ratzliff, M.D., Ph.D.,*

*John Sheldon Kern, M.D.*

### SYMPOSIA

#### Black Mental Health in the 21<sup>st</sup> Century

8:00 a.m. - 11:00 a.m.

Wabash Room, Third Floor, Palmer House Hilton

**Chair:** *Altha J. Stewart, M.D.*

**Presenters:** *Donna Marie Norris, M.D., Billy Emanuel Jones, M.D., Carl Compton Bell, M.D., Helena B. Hansen, M.D., Ph.D.*

#### Immigration and Mental Health

8:00 a.m. - 11:00 a.m.

Salon 12, Third Floor, Palmer House Hilton

**Chair:** *Falisha Marie Gilman, M.D.*

**Presenters:** *Andres Barkil-Oteo, M.D., M.Sc., Michelle Silva, Psy.D., Marco Ra.m.os, Kashif Ahmed*

**Discussant:** *Esperanza Diaz, M.D.*



# Program Highlights

## SATURDAY, OCTOBER 6, 2018

### FORUM

#### SAMHSA Town Hall: Interdepartmental Serious Mental Illness Coordinating Committee (ISMICC) Updates

3:00 p.m. – 4:30 p.m.

Salon 12, Third Floor, Palmer House Hilton

**Chair:** *Anita Everett, M.D.*

### LECTURE

#### Road to Wellness: An African American Female's Journey

10:00 a.m. – 11:30 a.m.

Salon 12, Third Floor, Palmer House Hilton

**Chair:** *Ranna Parekh, M.D., M.P.H.*

**Lecturer:** *Lauren Carson*

### SPECIAL SESSION

#### Applying the Integrated Care Approach 201: The Advanced Course in Collaborative Care

1:00 p.m. – 5:00 p.m.

Salon 5/8, Third Floor, Palmer House Hilton

**Chair:** *John Sheldon Kern, M.D.*

**Presenters:** *Anna Ratzliff, M.D., Ph.D., Patricia Ellen Ryan, M.D., Kristyn Spangler, Jeffrey T. Rado, M.D.*

### SYMPOSIA

#### Addressing Social Determinants and Health Disparities Using Technology

8:00 a.m. – 11:00 a.m.

Honore, Lobby Level, Palmer House Hilton

**Chair:** *John Torous, M.D.*

**Presenters:** *Dominika A. Winiarski, Ph.D., Liza Hoffman, L.C.S.W., M.S.W., Kunmi Sobowale, M.D., David Mohr, Ph.D., Niranjan S. Karnik, M.D., Ph.D., Keris Jän Myrick, M.B.A., M.S.*

**Discussant:** *Anita Everett, M.D.*

#### I See You: Dismantling Stigma in Communities of Color

8:00 a.m. – 11:00 a.m.

Salon 4/9, Third Floor, Palmer House Hilton

**Chair:** *Glenda L. Wrenn, M.D.*

**Presenters:** *Darin Latimore, M.D., Ruth S. Shim, M.D., M.P.H., Rhonda M. Mattox, Lucy Ogbu-Nwobodo*

## SUNDAY, OCTOBER 7, 2018

### LECTURE

#### Disparities Faced by Individuals With Mental Health Problems: Creating Tools and Forging Pathways for Change

8:00 a.m. – 9:30 a.m.

Honore, Lobby Level, Palmer House Hilton

**Lecturers:** *Adrienne Kennedy, M.A., Keris Jän Myrick, M.B.A., M.S., Paul M. Grant, Ph.D.*

# General Information

## APA Central & Bookstore

### Exhibit Hall, Fourth Floor

Thursday, October 4	1:30 p.m. – 5:30 p.m.
Friday, October 5	10:30 a.m. – 1:30 p.m. 2:30 p.m. – 5:30 p.m.
Saturday, October 6	10:30 a.m. – 12:30 p.m.

Discover the value of APA membership and the many benefits and programs APA has to offer, including research programs, APA Foundation, advocacy and practice management resources. If you are not already a member, we invite you to join the APA through the rebate program, saving you money on dues.

Stop by and purchase the latest publications, training materials and journals APA Publishing has to offer. You'll find new and bestselling titles, including *DSM-5*. APA members receive a 20% discount and APA resident-fellow members receive a 25% discount on all book products. Special member prices are available on subscription products.

Looking for a new job or need to post an open position? APA JobCentral can help. Come and meet members of the APA Administration that can assist you in your job or candidate search.

## APA Administration Office

### Wilson, Third Floor

Wednesday, October 3	9:00 a.m. – 5:00 p.m.
Thursday, October 4	7:30 a.m. – 5:30 p.m.
Friday, October 5	7:30 a.m. – 5:30 p.m.
Saturday, October 6	7:30 a.m. – 5:00 p.m.
Sunday, October 7	7:30 a.m. – Noon

## APA Meetings App

The APA Meetings App gives you all the up to date information you need to navigate IPS.

Search the scientific program by day, format, topic or speaker. Use maps to find meeting spaces and browse the Exhibit Hall, receive real-time alerts from the APA, and provide feedback through surveys.

To download the app for Apple and Android devices, visit the App Store or Google Play and search for “APA Meetings” or visit [psychiatry.org/app](https://psychiatry.org/app) from your mobile device.

## Audiovisual Preview

The Scientific Program Committee expects all presenters to preview their audiovisual materials prior to their sessions to familiarize themselves with the equipment. Presenters should plan to arrive at their session 30 minutes prior to their scheduled start time to preview audiovisual materials.

## Education Center

### Salon Foyer, Third Floor

Learn more about the latest APA online courses available through the Learning Center. Learn about APA resources to help with Maintenance of Certification.

Thursday, October 4	7:30 a.m. – 5:30 p.m.
Friday, October 5	7:30 a.m. – 5:30 p.m.
Saturday, October 6	7:30 a.m. – 5:30 p.m.
Sunday, October 7	7:30 a.m. – Noon

## CME Certificate and Certificate of Attendance

The general conference evaluation and CME certificate are available online at [psychiatry.org/IPScme](https://psychiatry.org/IPScme). The website will remain active until **January 7, 2019**. Certificates will not be available after this date.

Retain your six-digit badge number and/or your [my.psychiatry.org](https://my.psychiatry.org) username and password to access the online evaluation and print your certificate. The APA provides a CME certificate of credit for physicians and a certificate of attendance for non-physician attendees. Credit is earned on an hour-for-hour basis. Participants should maintain a list of sessions they attend to track CME credit hours earned.

# General Information

## Accreditation

The American Psychiatric Association (APA) is accredited by the Accreditation Council for Continuing Medical Education (ACCME) to provide continuing medical education for physicians. The APA designates this live activity for a maximum of 27 *AMA PRA Category 1 Credits™*. Physicians should claim only the credit commensurate with the extent of their participation in the activity.

## Exhibits and Connection Lounge

### Exhibit Hall, Fourth Floor

Thursday, October 4	3:30 p.m. – 5:30 p.m.
Friday, October 5	10:30 a.m. – 5:00 p.m.
Saturday, October 6	10:30 a.m. – 12:30 p.m.

For a full listing of Exhibit Hall events, see page 61.

## IPS on Social Media

Follow the conversation on Twitter at #IPSchicago.

## Lost and Found

### Wilson, Third Floor

Wednesday, October 3	9:00 a.m. – 5:00 p.m.
Thursday, October 4	7:30 a.m. – 5:30 p.m.
Friday, October 5	7:30 a.m. – 5:30 p.m.
Saturday, October 6	7:30 a.m. – 5:00 p.m.
Sunday, October 7	7:30 a.m. – Noon

## Participation Policy

The American Psychiatric Association's policy is to promote an environment of mutual respect, well-being, and collegiality at its meetings. APA values and benefits from the diverse opinions its members hold on the issues with which the Association and the psychiatric profession are confronted. All individuals at the meeting agree to conduct themselves in a manner appropriate for health care professionals. This includes respect for the intellectual property of others, proper display and use of meeting badges, and the avoidance of aggressive or inappropriate behavior towards others. Individuals participating in APA sponsored meetings agree to listen respectfully to all views presented, be courteous to others regardless of whether you agree or disagree with the views presented, and to exhibit the professionalism and collegiality expected of

psychiatrists. If an individual believes that these rules have been violated or acceptable social decorum has otherwise been breached, he or she shall contact APA staff to help with the situation. APA reserves the right to remove meeting access rights of any individual violating this policy and will not provide a refund. By registering for this meeting, you agree to abide by the Participation Policy as described above.

## Press Services

Media Inquiries should be directed to APA Corporate Communications and Public Affairs at 202-459-9732 or [press@psych.org](mailto:press@psych.org).

## Registration

### Exhibit Hall, Fourth Floor

Wednesday, October 3	3:30 p.m. – 5:00 p.m.
<i>(Members Only)</i>	
Thursday, October 4	7:30 a.m. – 5:00 p.m.
Friday, October 5	7:30 a.m. – 5:00 p.m.
Saturday, October 6	7:30 a.m. – 5:00 p.m.
Sunday, October 7	7:30 a.m. – 10:30 a.m.

*Admission to all sessions, the Exhibit Hall and the Opening Session is by registration badge only.*

The registration fee covers admission to all sessions except courses and includes a registration badge (badge is required for entry into all sessions, courses and the Exhibit Hall). The *Guide* and the *Syllabus and Proceedings* will be published online and available for download at [psychiatry.org/ips](http://psychiatry.org/ips).

# General Information

## Scientific Session Capacity Guidelines

**If a session you would like to attend is over capacity, as indicated by an official posted at the door, please find a different session to attend.**

The IPS Scientific Program Committee strives to schedule each session based on prior attendance data and best estimates. In the rare instance in which a session you want to attend is already at capacity, we ask that you attend another session and accept our apology for the inconvenience. Because of room capacity limitations and fire code enforcement, we cannot guarantee each session will be available to every participant.

Please abide by the following guidelines if you are in a crowded room.

- Take a seat as close to the front of the room as possible.
- Move to the center of the row and fill all seats so that chairs are available on the aisles for additional attendees.
- Do not stand or sit in the aisles or lean against walls. Please do not block exits or crowd doorways in violation of fire safety regulations.

**The Fire Marshall may shut down an overcrowded session; therefore, please either find a seat or choose another session to attend.**

## Sunshine Act

The Physician Payment Sunshine Act is a federal law that requires pharmaceutical and device manufacturers under certain circumstances to publicly report any complimentary gift, food, beverage, non-CME-certified education or other item of value given to physicians. Some of the food, product theaters and trinkets that may be available to you at this meeting have been sponsored by companies that may be required to report your receipt of that gift. The APA recommends that you ask the person providing the complimentary item whether your name will be reported under the Act before accepting complimentary products or food so that you can make an independent and educated decision to accept or not accept it.

## Tape Recording and Visual Reproduction Policies

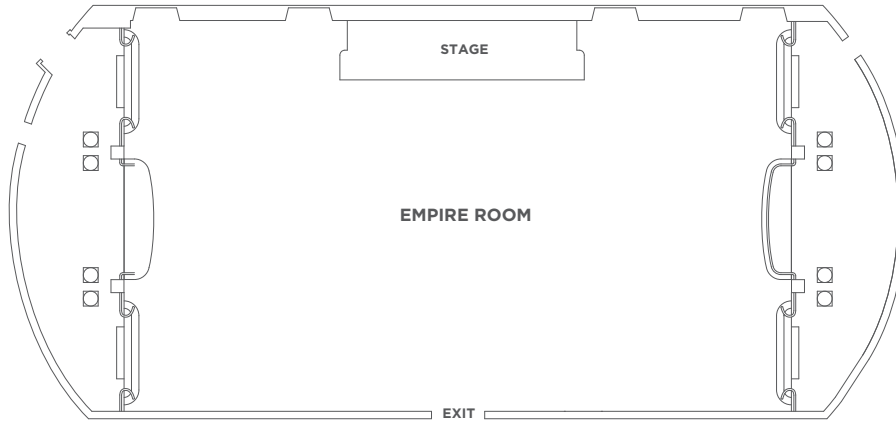
Attendees are not permitted to photograph (including with cell phone cameras) or video record any session, including presentation slides, as the intrusive nature of recording may disrupt the session including presentation slides. Larger, professional recorders are not permitted except for use by registered members of the working press in accordance with APA press policies.

## Wi-Fi

Complimentary Wi-Fi is available throughout the meeting space using the code: **APA2018IPS** on the network **PH\_Meeting\_Room**.

# Hotel Maps

## Empire, Lobby Level

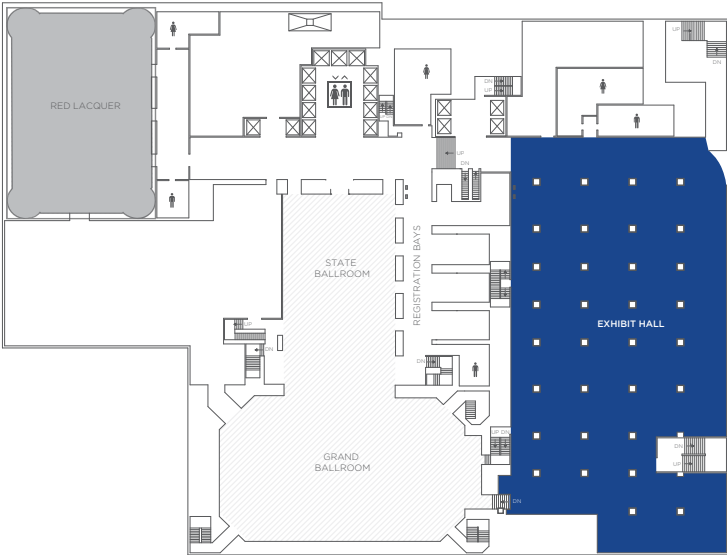


## Third Floor

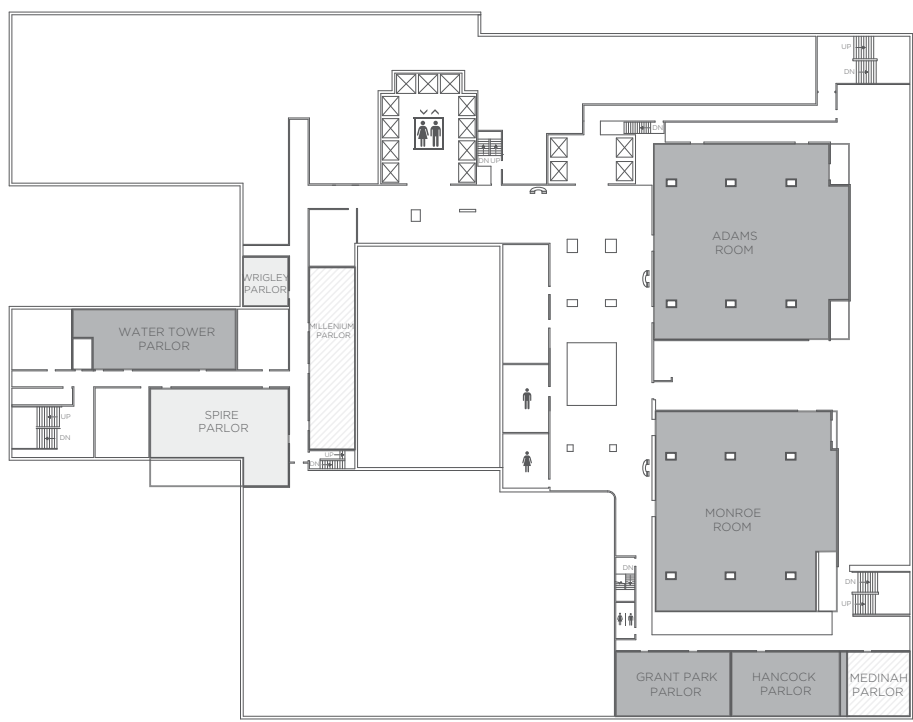


# Hotel Maps

## Fourth Floor



## Sixth Floor



# Continuing Medical Education

## Continuing Medical Education for Physicians

### Accreditation/Designation:

- The American Psychiatric Association (APA) is accredited by the Accreditation Council for Continuing Medical Education (ACCME) to provide continuing medical education for physicians.
- The APA designates this live activity for a maximum of *27 AMA PRA Category 1 Credits™*. Physicians should claim only the credit commensurate with the extent of their participation in the activity.
- CME credit is earned on an hour-for-hour basis for sessions in the Scientific Program. All sessions provide *AMA PRA Category 1 Credit™* with the exception of the opening session, poster sessions and where otherwise specified.

## Conference Objectives

At the conclusion of IPS: The Mental Health Services Conference, participants will be able to:

1. Integrate new research and treatment strategies into clinical practice;
2. Identify and improve mental health disparities in the community;
3. Recognize how to bring new innovations into a variety of treatments to improve patient care; and
4. Advance and update skills in community psychiatry treatment.

## Target Audience

IPS: The Mental Health Services Conference is designed for psychiatrists, primary care and other physicians, medical students and residents, nurses, physician assistants, psychologists, addiction counselors, social workers, medical educators, administrators and policy makers, public health researchers, consumers, and family members.

## APA Learning Center

Education doesn't have to end with the meeting! The APA offers a wide selection of on-demand CME credit programs through the Association's online Learning Management System, and new offerings are available each month. Earn more CME credit with some of our current online offerings at [education.psychiatry.org](http://education.psychiatry.org).

Topics include:

- Adolescent Exposure to Community Violence
- Assessment of Access to Weapons
- Assessment and Prescribing in Correctional Settings
- Climate Change and Disaster Mental Health
- Common Addiction Emergencies
- Gun Violence and Mental Illness
- Impact of Microaggression on Mental Health Outcomes
- Managing Physician Burnout
- Neurocognitive Implications of Heavy Marijuana Use in Adolescence
- Role Conflicts in Management of Sexual Offenders
- Study Guide for the Psychiatry Board Examination Q-Bank
- The Past, Present, and Probably Future of Violence Risk Assessment
- The Role of Behavioral Interventions in Buprenorphine Maintenance Treatment
- Transgender Mental Health
- Work-Life Balance for Female Mental Health Professionals

# Need a Certificate of Attendance for CME credit?

**APA makes it easy for you to access your Certificate of Credit or Attendance!**

---

[psychiatry.org/ipscme](https://psychiatry.org/ipscme)

---

## **Access Online During or After the Meeting.**

Access is available through **January 7, 2019** for both physician Certificates of Credit and non-physician Certificates of Attendance

## **Questions?**

Email [educme@psych.org](mailto:educme@psych.org).

The American Psychiatric Association (APA) is accredited by the Accreditation Council for Continuing Medical Education to provide continuing medical education for physicians.

The American Psychiatric Association designates this live activity for a maximum of *27 AMA PRA Category 1 Credits™*. Physicians should claim only the credit commensurate with the extent of their participation in the activity.



# Daily Attendance Log

Earn a maximum of 27 *AMA PRA Category 1 Credits™*. All sessions listed in the scientific program are designated for *AMA PRA Category 1 Credits™* except for poster sessions, the opening session and where otherwise specified.

This form is for your records and NOT for submission. Use this page to keep track of your attendance. Reporting is on an honor basis; claim one credit for each hour of participation.

Date	Session Title	# of Hours



# Special Session Highlights

## Physician Wellness and Burnout: A Town Hall Discussion With APA Leadership

**Friday, October 5**

1:00 p.m. – 2:30 p.m.

Salon 3, Third Floor, Palmer House Hilton

In this session, APA Leadership and APA Administration will discuss ways in which the APA can assist members in enhancing wellbeing and reducing burnout, as well as share data and tools already available in this area. Attendees are encouraged to share concerns and provide feedback to the panelists.

## Inside the APA Town Hall

**Saturday, October 6**

8:00 a.m. – 9:30 a.m.

Salon 12, Third Floor, Palmer House Hilton

Engage with members of the APA Leadership and APA Administration to discuss ways in which the APA can assist its members in improving their practices, addressing administrative burdens, and confronting issues related to health equity and the social determinants of mental health.

## Supporting Medical Directors in Behavioral Health Clinics

**Saturday, October 6**

10:00 a.m. – 11:30 a.m.

Grant Park Parlor, Sixth Floor, Palmer House Hilton

This session, open to APA members who are active medical directors in behavioral health clinics, is an opportunity to engage in a small group discussion with APA CEO and Medical Director Saul Levin, M.D., M.P.A. Medical directors will discuss challenges they face in their professional settings and brainstorm ways in which the APA might be able to assist.



# Learning Labs

Thursday, October 4, 2018

## **Releasing the Voice Within: Storycatchers Theatre's Musical Performance and Workshop**

Featuring musical stories and a workshop by Storycatchers Theatre's Changing Voices Ensemble, a post-release employment program for 17-24 year-olds, this learning lab will provide attendees with the opportunity to collaborate with the ensemble and learn from their experiences of successful reentry following incarceration. The session will begin with the presentation of an original musical and will be followed by guided discussions and role-playing exercises to augment the performance.

1:00 p.m. – 3:00 p.m.

Crystal Room, Third Floor, Palmer House Hilton

**Presenters:** *Tory Davidson, B.A. and the Changing Voices Ensemble*

Friday, October 5, 2018

## **Ethics in Real Time: Learning Through Simulation**

Working in teams, participants in this learning lab will engage in simulated scenarios with challenging ethical decisions and analyze the reasons and motivations that led to those decisions. Scenarios and group discussion in this session will challenge participants' perceptions of social determinants of mental health, moral decision making, and other factors that contribute to the complex ethics of psychiatric practice.

1:00 p.m. – 4:00 p.m.

Salon 2, Third Floor, Palmer House Hilton

**Presenter:** *Rebecca Weintraub Brendel, M.D., J.D.*

Saturday, October 6

## **Microaggressions, Macroeffects: Navigating Power and Privilege in Psychiatry**

This learning lab session will involve participants engaging in exercises to understand power, privilege and microaggressions that occur on a daily basis in our offices, clinics and hallways. A panel of facilitators will lead group discussion regarding the types of microaggressions, common reactions and how they might affect our interpersonal interactions.

8:00 a.m. – 11:00 a.m.

Crystal Room, Third Floor, Palmer House Hilton

**Presenters:** *Kimberly A. Gordon-Achebe, M.D., Michaela Y. Beder, M.D., Megan Elizabeth Baker, M.D., John F. Chaves, M.D., Bhinna Pearl Park, M.D., Shadé Miller, M.D., Cassandra Raphaël, M.D., M.P.H., Neal Goldenberg, M.D., M.P.H.*

## **You Are Human: Addressing Burnout Through Improv**

By applying the basic fundamentals of improv, psychiatrists can move from isolation to more connection. Attendees will learn to drop their barriers and guards and be comfortable with doing so, so that they are better equipped to take care of others. Using basic improv techniques allows every individual to overcome self judgement, drop pre-conceived notions to serve the situation/circumstances and not their own agenda, and be more comfortable about collaboration, communication and connection with others.

1:00 p.m. – 4:00 p.m.

Salon 6/7, Third Floor, Palmer House Hilton

**Presenters:** *Tristan Gorrindo, M.D. and Ashley Whitehurst*

# Disclosure Index

## American Psychiatric Association Continuing Medical Education Policy on Full Disclosure

For all program planners and presenters at CME activities, the American Psychiatric Association requires disclosure of any financial or other affiliation with commercial organization(s) that may have a direct or indirect interest in the subject matter of the educational activity. A “financial interest” may include, but is not limited to, being an employee and/or shareholder in the organization, being on retainer with the organization, or having research or honoraria paid by the organization. An “affiliation” may include holding a position on an advisory committee, speakers’ bureau, or some other role or benefit to a supporting organization.

In compliance with the ACCME’s Standards for Commercial Support, the APA has a management of conflict (MCI) process for all CME activities. This process ensures that all conflicts of interest are identified, managed and resolved prior to the educational activity. Additionally, the prospective audience must be informed of the presenters’ or program planners’ affiliations with every commercial interest by an acknowledgement in the printed program and verbal or visual disclosure to

participants at the session (disclosure by slide is required if audiovisual equipment is used for the presentation). Disclosing to learners the relevant financial relationships that were present and resolved assists learners in assessing the potential for bias in the information presented. The APA also requires verbal disclosure of discussion of unlabeled uses of a commercial product or investigational use of a product not yet approved for this purpose. The presenters and planners on the following pages indicated that either they or a spouse/partner have a financial interest or other affiliation with a commercial entity producing, marketing, re-selling or distributing health care goods or services consumed by or used on patients; the company name and affiliation are also listed. Providers of clinical services directly to patients are not considered to be commercial interests. The second group of presenters and planners indicated that neither they nor a spouse/partner has any relationship to disclose.

All presenters and planners must complete a disclosure in order to participate in an APA CME activity. This disclosure listing includes the presenters and planners of the scientific program and poster sessions.



# DISCLOSURE INDEX

The following program planners and presenters indicated disclosures as follows.

Please note - the information continues for each individual over a two page spread.

Name	Consultant/Advisory Board	Speakers Bureau/ Speaker Honoraria	Employee of Commercial Interest
Cotes, Robert Osterman	Alkermes	Otsuka Pharmaceuticals	
El-Mallakh, Rif S.		Allergan Merck & Co. Neurocrine Biosciences, Inc. Otsuka Pharmaceuticals Takeda Pharmaceuticals Teva Pharmaceuticals	
Fernandez-Miranda, Juan J.		Janssen Otsuka Pharmaceuticals	
Goodkin, Karl			
Kelly, Deanna	Lundbeck HLS Therapeutics		
Lake, MaryBeth	APPI		
Lieberman, Jeffrey Alan	Alkermes Eli Lilly and Company Intracellular Therapies Pierre Fabre Repligen Taisho Toyama Pharmaceutical Co., Ltd.		
Mohr, David	Otsuka Pharmaceuticals	Optum	
Odorzynski, Melissa			Genoa Healthcare
Parks, Joseph John	Otsuka Pharmaceuticals		
Penesetti, Deepak			Hello Session
Rado, Jeffrey T.	Roche	Alkermes	
Ratzliff, Anna			(Spouse/Partner) Allergan
Renner, John A.			
Saxon, Andrew John			
Sethi, Roopa			
Shawi, May			Janssen
Starr, Lynn			Janssen
Summers, Richard Fredric			
Vinson, Sarah Yvonne	Amerigroup Medical Advisory Council		Lorio Psych Group
Walkup, John T.		Tourette Association of America	

# DISCLOSURE INDEX

The following program planners and presenters indicated disclosures as follows.  
Please note - the information continues for each individual over a two page spread.

Name	Grant/Research Support	Stock/Other Financial Relationship	Other Disclosure
Cotes, Robert Osterman	Alkermes Otsuka Pharmaceuticals		
El-Mallakh, Rif S.	Janssen		
Fernandez-Miranda, Juan J.			
Goodkin, Karl	Eli Lilly and Company Janssen		
Kelly, Deanna			
Lake, MaryBeth			
Lieberman, Jeffrey Alan			Clintara, LLC
Mohr, David		Actualize	
Odorzynski, Melissa			
Parks, Joseph John			
Penesetti, Deepak		Hello Session (Spouse/ Partner) Hello Session	Founder, CEO, and Co-Owner: Hello Session
Rado, Jeffrey T.	Acadia		
Ratzliff, Anna			
Renner, John A.			
Saxon, Andrew John	Medicasafe, Inc.		
Shawi, May		Johnson & Johnson	
Starr, Lynn		Johnson & Johnson	
Vinson, Sarah Yvonne			Owner: Lorio Psych Group
Walkup, John T.	Tourette Association of America The Hartwell Foundation		

# DISCLOSURE INDEX

The following program planners and presenters indicated neither they nor a spouse/partner have any financial relationships to disclose:

Aaron, Samantha  
Abro, Safiullah  
Adil, Ayesha Saleem  
Aggarwal, Rashi  
Aguilera Nunez, Maria Gabriela  
Ahmed, Kashif  
Ahmed, Saeed  
Ahuja, Amir K.  
Akerere, Opemipo  
Alapati, Deepak  
Allen, Michael Hall  
Alvarez, Mary Beth  
Alves-Bradford, Jean-Marie E.  
Anabtawi, Noor  
Anam, Seeba  
Angelotta, Cara  
Annamalai, Aniyizhai  
Arora, Lily  
Ashby, Kimberly  
Ashley, Kenneth Bryan  
Assunta, Lepri  
Avellan Herrera, Carla Paola  
Babalola, Gbonjubola  
Badawy, Marwa  
Bahekar, Pratik  
Bailey, Rahn K.  
Baker, Megan Elizabeth  
Balfour, Margaret E.  
Ballard, Rachel R  
Baranoski, Madelon  
Barcelo, Nicolas E.  
Barkil-Oteo, Andres  
Batterson, James Robert  
Beckert, David R.  
Beder, Michaela Y.  
Bell, Carl Compton  
Berlin, Jon Scott  
Bernstein, Carol Ann  
Berry, Obianuju Jennifer  
Betlinski, Jonathan P.  
Bhattarai, Raju  
Bilenkis, Esther  
Black, Taylor Mac  
Bliss, Michael  
Bonds, Curley L.  
Bow, Simon M.  
Brar, Simran  
Brendel, Rebecca Weintraub  
Brownridge, Andrea M.  
Budde, Kristin S.  
Burnison, Erik  
Caban-Aleman, Carissa  
Carino, Anthony J.  
Carron, Benjamin  
Carson, Lauren  
Carson, Nicholas  
Casoy, Flavio  
Castellano, Cherie  
Castillo, Enrico Guanzon  
Chandraiah, Shambhavi  
Chau, Clayton  
Chaves, John F.  
Chen, Connie  
Chien, Peter L.  
Chilton, Julie A.  
Chowdhury, Jayanta  
Chwastiak, Lydia A.  
Clark, Meredith  
Clarke, Alex  
Cohen, Aly  
Colon-Rivera, Hector  
Compton, Michael T.  
Correa, Maria Elena  
Crapanzano, Kathleen A.  
Crawford-Roberts, Ann  
Cummins, Thomas K  
Cyrus, Kali Denise  
Dalfen, Ariel K.  
Dart, Thomas  
D'Auria, Anthony C.  
Davidson, Tory  
De Faria, Ludmila B.  
De Similien, Ralph H.  
Deb, Arkaprava  
Demissie, Emanuel  
Di Giandomenico, Cynthia  
Dialani, Nilesh  
Diao, Xavier Yang  
Diaz, Esperanza  
Díaz, Sylvia  
Dixon, Lisa  
Dominguez, Matthew Lee  
Don, Brian  
Durham, Michelle P.  
Edgcomb, Juliet  
Eisen, Jeffrey C.  
Emadi, Marissa  
Esang, Michael  
Everett, Anita  
Feldman, Jacqueline Maus  
Ferber, Stephen Paul  
Fernandez, Carlos  
Fisher, William A.  
Fitelson, Elizabeth M.  
Flaum, Michael A.  
Fleming, James Lee  
Flores, Marla  
Flores, Michael  
Florez Salamanca, Ludwing Alexis  
Ford, Elizabeth B.  
Forstein, Marshall  
Foxy, Kim  
Fried, Joanna  
Frolov, Latoya Sheree Comer  
Frye, Lara Elizabeth Aycock  
Fuehrlein, Brian Scott  
Furdek, Carolyn S.  
Furuta, Michelle L.  
Gabrellas, Gregory  
Gabriel, Mary T.  
Gabrielian, Sonya  
Gaebler, Carolyn  
Gartner, Kasey  
Garza, Robert E.  
Ghobadimanesh, Alexander  
Gillison, Daniel H.  
Gilman, Falisha Marie  
Goldenberg, Neal  
Goldfinger, Stephen Mark  
Goldman, Matthew Louis  
Goldstein Grumet, Julie  
Gonzalez, Victor Manuel  
Goodsmith, Nichole I.  
Gordon, Lynn  
Gordon-Achebe, Kimberly A.  
Gorrindo, Tristan  
Grant, Paul M.  
Greene, Abigail S.  
Griffith, James Lamont  
Gunderson, John Gunder  
Gunturu, Sasidhar  
Haidar, Ali Maher  
Hansen, Helena B.  
Harper, Annie  
Harris, Norman  
Harrison, Myla  
Harrison, Nzinga Ajabu  
Hatzis, Nicholas M  
He, Zane  
Hepburn, Brian Matthew  
Hertz-Picciotto, Irva  
Hoffman, Liza  
Hogan, Michael  
Hong, Victor  
Horton, John  
Hui, Katrina  
Hutton, Charlotte N.  
Iloka, Ike B.  
Izenberg, Jacob Michael



# DISCLOSURE INDEX

The following program planners and presenters indicated neither they nor a spouse/partner have any financial relationships to disclose:

Jacobs, Selby C.	McKeon, Richard	Petersen, Daena L.
Jain, Abhishek	McQuiston, Hunter L.	Pink, Deborah Anne
Janicak, Philip G.	Mehta, Pratik Ashok	Plata, Oscar Fernando
Jones, Billy Emanuel	Melancon, Sir Norman	Polavarapu, Apoorva M.
Jones-Bourne, Claudine Elaine	Merkel, R. Lawrence	Pollack, David Alan
Jordan, Ayana	Metin, Baris	Price, Daniel
Jorgensen, Shea M.	Mihajlovic, Aidaspahic S.	Pruette, Megan Elizabeth
Judd, Mollie	Miller, Shadé	Puri, Avanti
Kandefer, Sevie	Minkoff, Kenneth	Rabban, Diana
Karnik, Niranjan S.	Mitchell, Mark	Rahman, Jennifer
Kauffman, Sarah	Montross, Christine E.	Ramirez, Jeremy
Kaufmann, Craig P.	Morse, Emily E.	Ramos, Marco
Keil, Spencer	Morton, Isabella	Raphaël, Cassandra
Kemp, Allyson J.	Mulligan, Lauren A.	Rapp, Erica Kirsten
Kennedy, Adrienne	Murray, Phillip Michael	Rasimas, Joseph J.
Kern, John Sheldon	Muskin, Philip R.	Ravven, Simha Esther
Khandai, Abhisek Chandan	Myers, Alyson	Regincos, Rosa
Kim, Elizabeth	Myrick, Keris Jän	Reinoso, Paloma Lucia
Koh, Steve Hyun	Nascimento, Antonio Leandro	Rice, Karen M.
Kramer, Brett	Carvalho de Almeida	Roberge, Jason
Kraus, Louis James	Neira, Paula	Robinowitz, Carolyn Bauer
Kullar, Rumneet K.	Noble, Sarah C.	Roby, Yang Ao
Lam, June Sing Hong	Noby, Sally Ibrahim	Rodriguez Penney, Alan Tomas
Langley-Degroot, Michael Henri	Nordstrom, Kimberly D.	Rozel, John S.
Latimore, Darin	Norquist, Grayson Swayze	Runnels, Patrick S.
Le Blanc, Myriam	Norris, Donna Marie	Ryan, Patricia Ellen
Le Melle, Stephanie	Nzodom, Carine M.	Sadhu, Julie
Lee, Peter Y.	Ochoa, Kristen	Salazar, Rene
Leifman, Steve	Odom, Charles Rodolphe	Salisbury-Afshar, Elizabeth
Leli, Ubaldo	O'Donoghue, Elizabeth M.	Santopietro, John M.
Lenane, Zachary	Ogbu-Nwobodo, Lucy	Sawhney, Rishi
Leontieva, Lioubov	Ojha, Priti	Scallon, Jean
Levin, Saul	Okoye, Uchenna Barbara	Schoenbaum, Michael
Levounis, Petros	Okuda, Mayumi	Schweitzer, Jason
Lewis-Fernández, Roberto	Olives, Travis D.	Sethi, Roopa
Li, Luming	Ong, Kevin	Shadravan, Sonya
Lichtenstein, Max Alan	Ortega, Shane	Shah, Asim A.
Linder, Barbara	Osher, Fred Charles	Shah, Chandresh
Lu, Francis G.	Ouseph, Rita	Shaikh, Ladan
Lubliner, Erica	Overley, Ashley M.	Sheth, Neeral K.
MacLaurin, Sarah A.	Palmer, Brian A.	Shim, Ruth S.
Malak, Lawrence	Pan, Debanjan	Shirazi, Matthew R.
Mangurian, Christina V.	Panzer, Paula G.	Shrestha, Angela Devi
Manseau, Marc W.	Parekh, Ranna I.	Shrivastava, Shivanshu Vijaykumar
Marino, Leslie	Parikh, Vijal	Silva, Michelle
Marques, Andrea Horvath	Park, Bhinna Pearl	Simon, Kevin Mauclair
Marshall, David M.	Patel, Hiren	Sims, Brian R.
Martin, Laura F.	Patel, Sejal	Smith, Gilbert A.
Mathew, Teresa E.	Pearson, Jane	Sobowale, Kunmi
Mathews, Eva Marina	Pena, Tatyana	Soloway, Scott M.
Matos, Felix Oscar Priamo	Pepper, David A.	Spangler, Kristyn
Mattox, Rhonda M.	Perera, Frederica	Sperber, Jacob Elliott
McGuire Morton, Kelly	Pesiridou, Angeliki	Srinivasa Sekaran, Balaji Subramanian

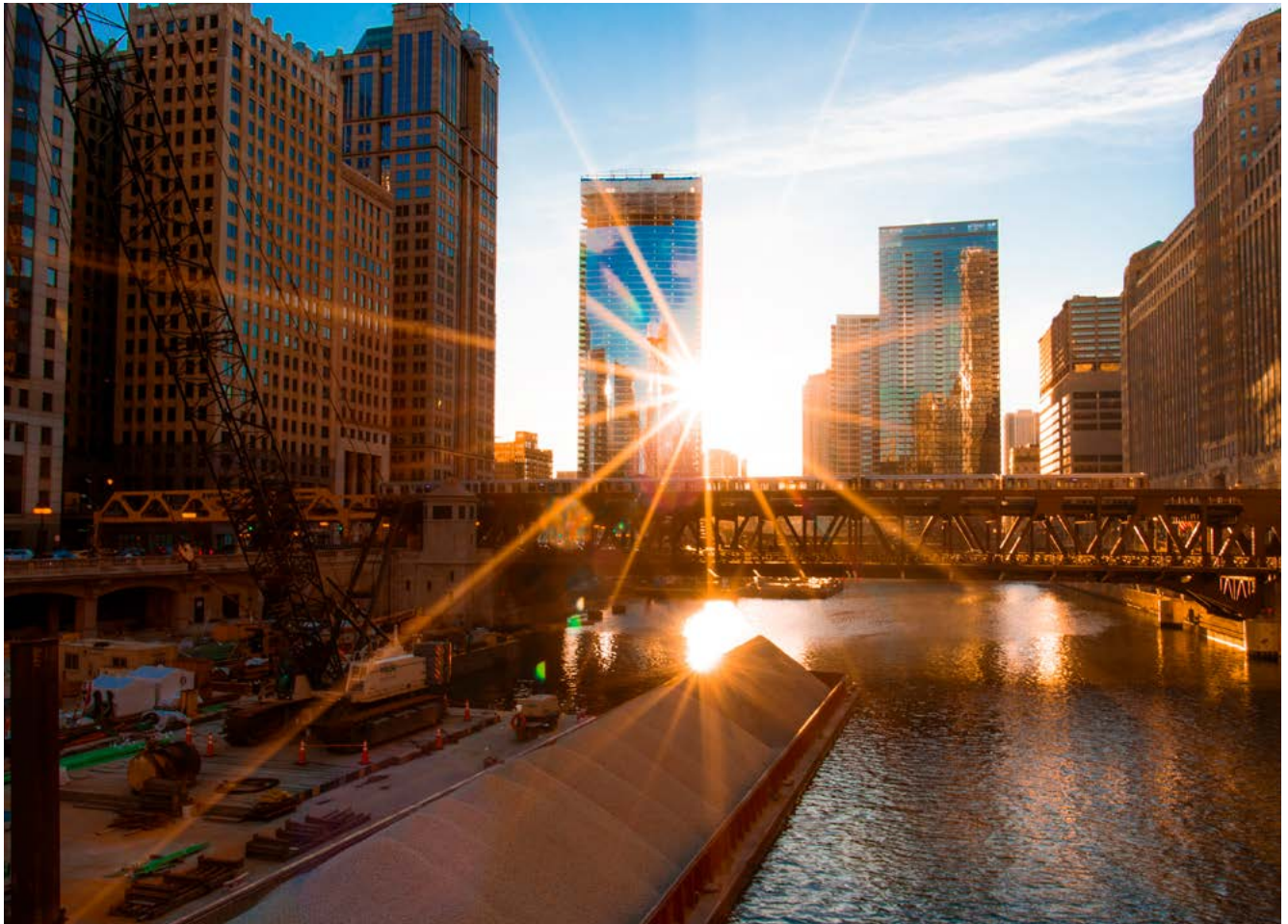
# DISCLOSURE INDEX

The following program planners and presenters indicated neither they nor a spouse/partner have any financial relationships to disclose:

Starks, Steven M.  
Stewart, Altha J.  
Stotland, Nada Logan  
Strong, Michael A.  
Sturkey, Andre  
Summers, Richard Fredric  
Talley, Rachel Melissa  
Tann, Victoria J.  
Tasca, Jessica N.  
Taubman, Danielle S.  
Teo, Alan R.  
Tepper, Miriam C.  
Thant, Thida Myo  
Thompson, Kenneth Stewart  
Tirado-Morales, Dimas Javier  
Torous, John

Torres Llenza, Vanessa  
Torrey, William Chandler  
Tran, Danny  
Tran, Nhut Giuc  
Tsai, Chu Wei  
Ursitti, Antoinette  
Vijayaraghavan, Manisha  
Viswanathan, Ramaswamy  
Volpp, Serena Yuan  
Vyas, Gopal  
Wasiq, Saad  
Watson, Amy  
Watts, Vabren L.  
Whitaker, Agnes  
Whitehurst, Ashley  
Wiechers, Ilse R.

Williams, Francois  
Winiarski, Dominika A.  
Woodring, Therese  
Wrenn, Glenda L.  
Yadav, Harjasleen Bhullar  
Yankura, David J.  
Yarbrough, Eric  
Yavi, Mani  
Yazdavar, Amir  
Zaidi, Muhammad Ali  
Zell, Beth  
Zeller, Scott L.  
Znaty, Lionel E.  
Zun, Leslie



# JobCentral

## The Career Hub for Psychiatry



### Manage Your Career

- Browse hundreds of active job listings!
- Create an account to save jobs, store multiple resumes and cover letters and communicate with employers through our internal messaging system.
- Set up multiple job alerts specifying your skills, interests and location to receive e-mails when employers post jobs that match your criteria.

### Recruit for Open Positions

- Post your job in front of thousands of highly qualified psychiatrists.
- Cross promote your job listing in *Psychiatric News*.
- Search the anonymous resume database to find your ideal candidate.

AMERICAN  
PSYCHIATRIC  
ASSOCIATION



**JOBCENTRAL**  
The Career Hub for Psychiatry

[jobs.psychiatry.org](http://jobs.psychiatry.org)

AH1838A

# Focus

The Journal of Lifelong Learning in Psychiatry

## Focus is The Best Resource for

- Clinical Synthesis
- Expert Guidance
- Lifelong Learning
- Maintenance of Certification

**Focus**, APA's quarterly clinical review journal, is designed for practicing psychiatrists to keep abreast of significant clinical knowledge and advances in the field through self-directed lifelong learning. Four issues each year provide comprehensive reviews of major clinical areas of psychiatry. **Focus** also provides an organized learning and self-assessment program with 44 hours of CME each year.

## An Annual Subscription to Focus Gives You:

- Reviews of core areas in psychiatry, with each issue overseen by a Guest Editor clinical expert in that area.
- Articles on best practices, new developments and the current state of practice.
- Quizzes that allow you to earn up to five *AMA PRA Category 1 Credits*<sup>™</sup> by completing CME questions for each issue—for a total of up to 20 CME credits per year.
- An annual 120-question **self-assessment exam** for an additional 24 CME credits and APBN MOC self-assessment credits that provides you with a comparison of your result against the group score of your peers.
- Online access to back issues (CME credits for issue quizzes available only for your subscription year).



CONFERENCE DISCOUNT

**\$50** off subscription price  
Valid Oct. 4-6, 2018

Visit the APA Bookstore to subscribe!

[focus.psychiatryonline.org](http://focus.psychiatryonline.org)



AMERICAN  
PSYCHIATRIC  
ASSOCIATION  
PUBLISHING



www.appi.org  
1-800-368-5777  
appi@psych.org

Priority Code AH1838

# Program Format Descriptions

## Courses

Courses provide enriched learning experiences that actively involve participants and include the opportunity for informal exchange with faculty. Offered in four-hour (half-day), six-hour (full-day) and eight-hour (full-day) sessions, courses either review basic concepts in a special subject area or present advanced material on a circumscribed topic. Participation in courses requires advance registration and an additional registration fee.

## Forums

Forums are flexible 90-minute presentations that afford participants the opportunity to highlight timely topics of interest to psychiatrists. Speakers and panel members are chosen for their expertise and leadership in the field.

## Learning Lab

The Learning Lab introduces exciting, innovative ways to learn at the IPS Conference. Each session in the Learning Lab transforms learning through collaboration, rich discussion around issues impacting psychiatry and hands-on learning.

## Lectures

Lectures feature a small number of distinguished speakers discussing scientific and cultural topics, many of which will extend our understanding beyond the usual limits of clinical psychiatry. The Scientific Program Committee invites the lecturers to present as part of the scientific program.

## Posters

This format highlights presentations of very recent findings. Posters are visual, self-explanatory presentations. See the Poster Sessions section (page 52) of this guide for a complete schedule of poster presentations. Poster sessions are not offered for CME credit.

## Symposia

Symposia are three-hour sessions consisting of four to six presentations that are thematically linked and focus on a specific topic relevant to clinical psychiatry. This format is designed to provide comprehensive treatment of a topic or discussion of the topic from several points of view and stimulate discussion with the audience.

## Workshops

Workshops are 90-minute sessions that typically involve brief presentations from individual panel members, followed by the opportunity for lively and informative discussion. This format provides for substantial audience participation and is highly interactive.





## SCIENTIFIC PROGRAM

# SCIENTIFIC PROGRAM

## OPENING SESSION PRESENTER



### **Camara Phyllis Jones, M.D., Ph.D., M.P.H.,**

is a past president of the American Public Health Association (2015–2016) and a senior fellow at the Satcher Health Leadership Institute and the Cardiovascular Research Institute at the Morehouse School of Medicine.

Dr. Jones is a family physician and epidemiologist whose work focuses on naming, measuring, and addressing the impacts of racism on the health and well-being of the nation. She seeks to broaden the national health debate to include not only universal access to high-quality health care, but also attention to the social determinants of health (including poverty) and the social determinants of equity (including racism).

Dr. Jones is a public health leader valued for her creativity and intellectual agility.

As a methodologist, she has developed new methods for comparing full distributions of data—rather than simply comparing means or proportions—in order to investigate population-level risk factors and propose population-level interventions.

As a social epidemiologist, her work on “race”-associated differences in health outcomes goes beyond simply documenting those differences to vigorously investigating the structural causes of the differences.

As a teacher, her allegories on “race” and racism illuminate topics that are otherwise difficult for many Americans to understand or discuss. She aims through her work to catalyze a national conversation on racism that will mobilize and engage all Americans in a National Campaign Against Racism.

Dr. Jones was an assistant professor at the Harvard School of Public Health (1994–2000) before being recruited to the Centers for Disease Control and Prevention (2000–2014), where she served as Medical Officer and Research Director on Social Determinants of Health and Equity. Highly valued as a mentor and teacher, she is currently an adjunct professor at the Rollins School of Public Health at Emory University and an adjunct associate professor at the Morehouse School of Medicine.

She has been elected to service on many professional boards, including the Board of Directors of the American College of Epidemiology, the Executive Board of the American Public Health Association, the Board of Directors of the DeKalb County (Georgia) Board of Health, the Board of Directors of the National Black Women’s Health Project, and the National Board of Public Health Examiners.

She is also actively sought as a contributor to national efforts to define health equity, including her role as a project advisor and on-screen expert for the groundbreaking film series *Unnatural Causes: Is Inequality Making Us Sick?* She recently co-chaired the Consensus Panel on Racism and Health: Creating a Canon for Discourse and Action convened by the W. Montague Cobb/National Medical Association Health Institute.

Her many awards include the David Satcher Award (ASTDHPPE, 2003), Hildrus A. Poindexter Distinguished Service Award (APHA Black Caucus, 2009), John Snow Award (APHA Epidemiology, 2011), Paul Cornely Award (APHA Health Activists, 2016), Woman in Medicine Award (NMA Women Physicians, 2017), Hansen Leadership Award (University of Iowa Public Health, 2017), and Louis Stokes Health Advocacy Award (NMA, 2018). Lauded for her compelling clarity on issues of “race” and racism, she has delivered seven commencement addresses in the past four years: University of Washington School of Public Health (2014), University of California San Francisco School of Medicine (2016), University of California Berkeley School of Public Health (2016), University of Minnesota School of Public Health (2017), Southern Illinois University School of Medicine (2017), City University of New York School of Medicine (2017), and University of North Carolina Gillings School of Global Public Health (2018). She was also awarded an honorary Doctorate of Science by the Icahn School of Medicine at Mount Sinai (2016).

Dr. Jones earned her BA in molecular biology from Wellesley College, her MD from the Stanford University School of Medicine, and both her Master of Public Health and her PhD in epidemiology from the Johns Hopkins School of Hygiene and Public Health. She also completed residency training in General Preventive Medicine at Johns Hopkins and in family practice at the Residency Program in Social Medicine at Montefiore Medical Center.

# SCIENTIFIC PROGRAM

## LECTURER BIOS



### **Cherie Castellano, C.S.W., M.A.,**

is a national expert in the field of peer support, behavioral healthcare, and crisis intervention. She is a faculty member of the Rutgers Department of Psychiatry, where she has honed her clinical skills as an expert in peer support, law enforcement psychological services, and trauma and crisis support. She is the creator of the Reciprocal Peer Support Model, recognized as a national best practice model by the Department of Defense's Center of Excellence. Since its creation, the model has been replicated for New Jersey law enforcement officers, firefighters, veterans, foster parents, trauma patients, and other groups, providing services to high-risk populations in need through more than 150,000 peer support contacts. She has published two books and has been a featured speaker at national and international forums. Cherie began as the program director for Cop 2 Cop, the first legislated law enforcement crisis hotline in the United States.



### **Elizabeth Fitelson, M.D.,**

is an assistant professor of psychiatry and the co-founder and director of the women's program in the department of psychiatry at Columbia University Medical Center. Her area of clinical expertise includes the evaluation and treatment of psychiatric disorders across the female life cycle, including perinatal psychopharmacological management, menstrual cycle- and perimenopause-related disorders, infertility, and pregnancy loss. Dr. Fitelson co-directs the Columbia Psychiatry Domestic Violence Initiative, a collaboration with the Chapman-Perelman Foundation, the Mayor's Office to Combat Domestic Violence, and NYC Health and Hospitals, providing psychiatric care to domestic violence survivors at New York City's Family Justice Centers. She completed her medical training and residency at Columbia University/New York Presbyterian Hospital, as well as a fellowship in public psychiatry at the New York State Psychiatric Institute.



### **Kimberly M. Foxx, J.D.,**

is the first African-American woman to lead the Cook County State's Attorney's Office—the second largest prosecutor's office in the country. Kim took office on December 1, 2016, with a vision for transforming the Cook County State's Attorney's Office into a fairer, more forward-thinking agency focused on rebuilding the public trust, promoting transparency, and being proactive in making all communities safe. In her first year in office, Kim revamped the office's Conviction Integrity Unit, resulting in overturned convictions in over 20 cases, including the first-ever mass exoneration in Cook County for 15 men whose convictions stemmed from misconduct by a Chicago police officer. Born and raised on Chicago's Near North Side, Kim is a graduate of Southern Illinois University, where she earned a B.A. in political science and a J.D. from the SIU School of Law.



# SCIENTIFIC PROGRAM

## LECTURER BIOS



### Andre Sturkey

is a graduate of Morgan State University, located in Baltimore, Maryland, with a bachelor's degree in psychology. He is a member of Omega Psi Phi Fraternity, Inc. as well as community outreach planner for Living Waters Ministries. Mr. Sturkey has worked in the mental health field since 2004. He currently works for Mosaic Community Services as part of Chesapeake Connections, a program that serves adults with severe, persistent behavioral health challenges in Baltimore, Maryland. Over his 12 years with Chesapeake Connections, he has risen from a case manager to his current position as coordinator of life skills. Mr. Sturkey is a certified mental health first aid instructor, as well as a certified Mandt instructor.

## Track Key

- 1** Addiction Psychiatry
- 2** Administrative Psychiatry
- 3** Community Psychiatry
- 4** Diversity and Health Equity
- 5** Integrated and Collaborative Care
- 6** Psychopharmacology
- 7** Technology (EHR, Telepsychiatry, Apps)
- 8** Wellness
- Bring Your Own Device

## 8:00 a.m. Sessions

### Lecture

#### Transforming the Criminal Justice System in the Cook County State's Attorney Office

**2**

8:00 a.m. - 9:30 a.m.  
Honore, Lobby Level  
Palmer House Hilton

**Chair:**  
*Glenda L. Wrenn, M.D.*

**Lecturer:**  
*Kim Foxx, J.D.*

### Workshops

#### Fostering Resilience and Addressing Social Determinants: A Pilot Model of Post-Disaster Interventions in Puerto Rico

8:00 a.m. - 9:30 a.m.  
Grant Park Parlor, Sixth Floor  
Palmer House Hilton

**Chair:**  
*Vanessa Torres Llenza, M.D.*

**Presenters:**  
*Carissa Caban-Aleman, M.D.*  
*Dimas Javier Tirado-Morales, M.D.*  
*Hector Colon-Rivera, M.D.*  
*Alan Tomas Rodriguez Penney, M.D.*

#### Microaggression and Strategies to Overcome Prejudice

**4**

8:00 a.m. - 9:30 a.m.  
Salon 4/9, Third Floor  
Palmer House Hilton

**Chairs:**  
*Ranna I. Parekh, M.D.*  
*Carl Compton Bell, M.D.*

**Presenters:**  
*Vabren L. Watts, Ph.D.*  
*Eric Yarbrough, M.D.*  
*Kali Denise Cyrus, M.D., M.P.H.*  
*Erica Lubliner, M.D.*  
*Deepak Penesetti, M.D.*

**Discussants:**  
*Ranna I. Parekh, M.D.*  
*Carl Compton Bell, M.D.*

## Symposia

#### Addressing the Mental Health Needs of Survivors of Intimate Partner Violence (IPV) in the Community

**3**

8:00 a.m. - 11:00 a.m.  
Salon 12, Third Floor  
Palmer House Hilton

**Chairs:**  
*Mayumi Okuda, M.D.*  
*Rosa Regincos*

**Presenters:**  
*Tatyana Pena*  
*Ladan Shaikh, M.D.*  
*Elizabeth M. Fitelson, M.D.*  
*Obianuju Jennifer Berry, M.D., M.P.H.*

#### Criminal Justice and Mental Illness: Stepping Up

8:00 a.m. - 11:00 a.m.  
Wabash Room, Third Floor  
Palmer House Hilton

**Chairs:**  
*Daniel H. Gillison Jr.*  
*Steve Leifman, J.D.*

**Presenters:**  
*Fred Charles Osher, M.D.*  
*Stephanie Le Melle, M.D., M.S.*  
*Altha J. Stewart, M.D.*  
*Sheriff Thomas Dart*

# SCIENTIFIC PROGRAM

**Improving Medication Adherence: An Expert Consensus Report of the National Council Medical Director Institute**  
*American Association of Community Psychiatrists*

**3 6**

8:00 a.m. - 11:00 a.m.  
 Salon 3, Third Floor  
 Palmer House Hilton

**Chair:**  
*Joseph John Parks, M.D.*

**Presenters:**  
*Melissa Odorzynski, Pharm.D., M.P.H.*  
*Patrick S. Runnels, M.D.*  
*Paula G. Panzer, M.D.*  
*Jeffrey Alan Lieberman, M.D.*

**Opioid Emergencies: Practical and Policy Considerations in the Management of Opioid Use Disorder in the Emergency Setting**  
*American Association for Emergency Psychiatry*

**1**

8:00 a.m. - 11:00 a.m.  
 Adams, Sixth Floor  
 Palmer House Hilton

**Chair:**  
*John S. Rozel, M.D.*

**Presenters:**  
*Abhishek Jain, M.D.*  
*David A. Pepper, M.D.*  
*David J. Yankura, M.D.*  
*Brian Scott Fuehrlein, M.D., Ph.D.*  
*Leslie Zun, M.D., M.B.A.*

**Discussant:**  
*Jon Scott Berlin, M.D.*

**Psychiatry, Health Equity and the Diseases of Despair and Disparity: The Antidotes of Hope, Inclusion and Resilience**  
*American Association for Social Psychiatry*

**3 4**

8:00 a.m. - 11:00 a.m.  
 Salon 5/8, Third Floor  
 Palmer House Hilton

**Chair:**  
*Kenneth Stewart Thompson, M.D.*

**Presenters:**  
*Ruth S. Shim, M.D., M.P.H.*  
*James Lamont Griffith, M.D.*  
*Kenneth Stewart Thompson, M.D.*

**Discussants:**  
*Aidaspahic S. Mihajlovic, M.D., M.S.*  
*Michael T. Compton, M.D., M.P.H.*

**Treatment in Transition: The Rapidly Evolving Landscape of Transgender Care**  
*Association of Gay and Lesbian Psychiatrists*

**3**

8:00 a.m. - 11:00 a.m.  
 Salon 6/7, Third Floor  
 Palmer House Hilton

**Chair:**  
*Matthew Lee Dominguez, M.D., M.P.H.*

**Presenters:**  
*Angela Devi Shrestha, M.D.*  
*Amir K. Ahuja, M.D.*

**Discussant:**  
*Kenneth Bryan Ashley, M.D.*

## Track Key

- 1** Addiction Psychiatry
- 2** Administrative Psychiatry
- 3** Community Psychiatry
- 4** Diversity and Health Equity
- 5** Integrated and Collaborative Care
- 6** Psychopharmacology
- 7** Technology (EHR, Telepsychiatry, Apps)
- 8** Wellness
-  Bring Your Own Device

## Course

Courses require advance registration and an additional registration fee. Course descriptions are available in the APA Meetings App. Attendees can enroll in courses at Registration, Exhibit Hall, Fourth Floor, Palmer House Hilton. Admission to all courses is by course enrollment only.

**Buprenorphine and Office-Based Treatment of Opioid Use Disorder**  
*Council on Addiction Psychiatry*

**1**

8:00 a.m. - 5:00 p.m.  
 Monroe, Sixth Floor  
 Palmer House Hilton

**Director:**  
*John A. Renner, M.D.*

**Faculty:**  
*Petros Levounis, M.D.*  
*Andrew John Saxon, M.D.*

## 10:00 a.m. Sessions

### Forum

**Do Organized Minority/Underrepresented Groups Make a Difference in Promoting Health Equity and Diversity in Leadership?**  
*Council on Minority Mental Health and Health Disparities*

**4**

10:00 a.m. - 11:30 a.m.  
 Honore, Lobby Level  
 Palmer House Hilton

**Chair:**  
*Ramaswamy Viswanathan, M.D., D.Sc.*

**Presenters:**  
*Ranna I. Parekh, M.D.*  
*Christina V. Mangurian, M.D.*  
*Ubaldo Leli, M.D.*

Program changes are posted each day in the APA Meetings App. Please see the app for the definitive program.



# SCIENTIFIC PROGRAM

## Workshop

### Advocacy Skills for Psychiatrists: From Getting Started to Taking It to the Next Level

**4**

10:00 a.m. - 11:30 a.m.  
Grant Park Parlor, Sixth Floor  
Palmer House Hilton

**Chair:**

*Michaela Y. Beder, M.D.*

**Presenters:**

*Flavio Casoy, M.D.*

*Marc W. Manseau, M.D., M.P.H.*

*Karen M. Rice, M.D.*

*Carissa Caban-Aleman, M.D.*

## 1:00 p.m. Sessions

### Forum

### Law Enforcement-Mental Health Interactions and the Crisis Intervention Team (CIT) Model

1:00 p.m. - 2:30 p.m.  
Salon 6/7, Third Floor  
Palmer House Hilton

**Chair:**

*Abhisek Chandan Khandai, M.D., M.S.*

**Presenters:**

*Amy Watson, Ph.D.*

*Michael T. Compton, M.D., M.P.H.*

*Philip G. Janicak, M.D.*

*Lt. Antoinette Ursitti*

## Lecture

### Psychiatric Services Achievement Award Winners: Innovation in Service Delivery

*Psychiatric Services  
Achievement Awards*

**3**

1:00 p.m. - 2:30 p.m.  
Honore, Lobby Level  
Palmer House Hilton

**Chair:**

*Altha J. Stewart, M.D.*


**Lecturers:**

*Andre Sturkey*

*Elizabeth M. Fitelson, M.D.*

*Cherie Castellano, C.S.W., M.A.*

## Track Key

- 1** Addiction Psychiatry
- 2** Administrative Psychiatry
- 3** Community Psychiatry
- 4** Diversity and Health Equity
- 5** Integrated and Collaborative Care
- 6** Psychopharmacology
- 7** Technology (EHR, Telepsychiatry, Apps)
- 8** Wellness
-  Bring Your Own Device

## Workshops

### Borderline Personality Disorder: Best Practices to Optimize Care in Diverse Treatment Settings

1:00 p.m. - 2:30 p.m.  
Wabash Room, Third Floor  
Palmer House Hilton

**Chair:**

*Victor Hong, M.D.*

**Presenters:**

*Brian A. Palmer, M.D., M.P.H.*

*Daniel Price, M.D.*

**Discussant:**

*John Gunder Gunderson, M.D.*

### Combining Jail Diversion With Permanent Supportive Housing: Innovations in Los Angeles

1:00 p.m. - 2:30 p.m.  
Salon 5/8, Third Floor  
Palmer House Hilton

**Chair:**

*Kristen Ochoa, M.D., M.P.H.*

**Presenters:**

*Elizabeth Kim, J.D., L.C.S.W.*

*Sonya Shadravan, M.D.*

*Nichole I. Goodsmith, M.D., Ph.D.*

### Hematologic Side Effects and Benign Ethnic Neutropenia With Clozapine

**6**

1:00 p.m. - 2:30 p.m.  
Adams, Sixth Floor  
Palmer House Hilton

**Chair:**

*Deanna Kelly, Pharm.D.*

**Presenters:**

*Gopal Vyas, D.O.*

*Deanna Kelly, Pharm.D.*

## Workshops

### Leadership Stories From Psychiatric Residency and Clinical Administration: Practical Skills for Training Future Psychiatric Leaders APA Public Psychiatry Fellowship

**2**

1:00 p.m. - 2:30 p.m.  
Salon 3, Third Floor  
Palmer House Hilton

**Chair:**

*Luming Li, M.D.*

**Presenters:**

*Michael Henri Langley-Degroot, M.D.*

*Megan Elizabeth Pruetten, M.D.*

*Kevin Mauclair Simon, M.D.*

*Lawrence Malak, M.D.*

*Marc W. Manseau, M.D., M.P.H.*

*Anita Everett, M.D.*

### Mental Health Services for Youth Experiencing Homelessness: A Multidisciplinary, Harm- Reduction Approach

**4**

1:00 p.m. - 2:30 p.m.  
Grant Park Parlor, Sixth Floor  
Palmer House Hilton

**Chair:**

*Jason Schweitzer, M.D.*

**Presenters:**

*Priti Ojha, M.D.*

*Steve Hyun Koh, M.D.*

*Diana Rabban, L.C.S.W.*

*Marla Flores*

Program changes are posted each day in the APA Meetings App. Please see the app for the definitive program.



# SCIENTIFIC PROGRAM

**The 3AM Phone Call: Advancing Crisis Services into the 21<sup>st</sup> Century**

**3**

1:00 p.m.- 2:30 p.m.  
Salon 12, Third Floor  
Palmer House Hilton

**Chair:**  
*Margaret E. Balfour, M.D., Ph.D.*

**Discussant:**  
*Kenneth Minkoff, M.D.*

## Learning Lab

***Releasing the Voice Within:***  
**Story-catchers Theater's Musical Performance and Workshop**

**3** 

1:00 p.m. - 3:00 p.m.  
Crystal Room, Third Floor  
Palmer House Hilton

**Chair:**  
*Tory Davidson, B.A.*


## 1:30 p.m. Session

### Poster Session

#### Poster Session 1

1:30 p.m.- 3:00 p.m.  
Exhibit Hall, Fourth Floor  
Palmer House Hilton

## Track Key

- 1** Addiction Psychiatry
- 2** Administrative Psychiatry
- 3** Community Psychiatry
- 4** Diversity and Health Equity
- 5** Integrated and Collaborative Care
- 6** Psychopharmacology
- 7** Technology (EHR, Telepsychiatry, Apps)
- 8** Wellness
-  Bring Your Own Device

# SCIENTIFIC PROGRAM

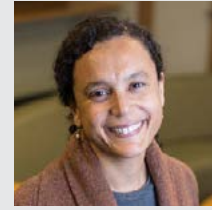
## LECTURER BIOS



**Carol A. Bernstein, M.D.,** is professor of psychiatry and neurology, vice chair of education, and director of residency training in psychiatry at the NYU School of Medicine. Dr. Bernstein is a past president of the American Psychiatric Association. She served on the board of the ACGME from 2010 to 2016 and currently co-chairs the ACGME Task Force on Physician Wellbeing. Dr. Bernstein completed medical school at the Columbia University College of Physicians and Surgeons. Following an internship in internal medicine at St. Luke's/Roosevelt Medical Center in New York, she completed her psychiatric residency training at Columbia University and the New York State Psychiatric Institute.



**Sonya Gabrielian, M.D., M.P.H.,** is a psychiatrist and health services researcher at the VA Greater Los Angeles (VAGLA) and the UCLA David Geffen School of Medicine and an assistant professor in psychiatry and biobehavioral sciences at UCLA. Dr. Gabrielian completed her medical training at UCLA. She practices psychiatry in VAGLA's Community Engagement and Reintegration Service and is an investigator at VAGLA; the Center for the Study of Healthcare Innovation, Implementation, and Policy; and the National Center on Homelessness Among Veterans. Her research aims to improve housing retention and community functioning among homeless adults with serious mental illness.



**Helena B. Hansen, M.D., Ph.D.,** is associate professor of anthropology and on the psychiatry research faculty at NYU. She has published widely in clinical and social science journals ranging from *JAMA* to *Social Science and Medicine*, on faith healing of addiction in Puerto Rico, psychiatric disability under welfare reform, addiction pharmaceuticals and race, and ethnic marketing of pharmaceuticals. She has received major funding from NIDA, the Mellon Foundation, and the Robert Wood Johnson Foundation.

# SCIENTIFIC PROGRAM

## LECTURER BIOS



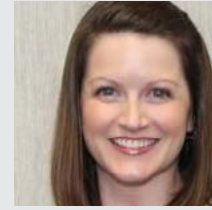
**Roberto Lewis-Fernández, M.D.,**

is professor of clinical psychiatry at Columbia, director of the NYS Center of Excellence for Cultural Competence and the Hispanic Treatment Program, and co-director of the Anxiety Disorder Clinic at NYS Psychiatric Institute. His research develops culturally valid interventions and tools to assess illness experience and help-seeking expectations, enhance patient engagement, reduce misdiagnosis, and overcome disparities in the care of underserved cultural groups. He is chair of the Cultural Committee of the Group for the Advancement of Psychiatry, president of the Society for the Study of Psychiatry and Culture, president-elect of the World Association of Cultural Psychiatry, and past president of the American Society of Hispanic Psychiatry. He was a member of the NIMH Council and chair of the *DSM-5* Cross-Cultural Issues Subgroup. He chairs the *DSM* Review Committee for Internalizing Disorders and co-chairs the ICD-11 Working Group on Culture-Related Issues.



**Marc Manseau, M.D., M.P.H.,**

graduated with a degree in human biology from Brown University, where he also earned a master's in public health. He completed medical school at the Columbia University College of Physicians and Surgeons. After graduating from general psychiatry residency training at the New York University School of Medicine, Dr. Manseau completed a fellowship in public psychiatry at Columbia University. He then worked as an attending psychiatrist in the Bellevue Hospital Outpatient Psychiatry Clinic, as well as the psychiatrist/medical director for Bellevue's OnTrackNY program, an intensive, recovery-oriented intervention for the first-episode psychosis population. He is currently a clinical assistant professor of psychiatry at the New York University School of Medicine and serves as the associate medical director of adult services at the New York State Office of Mental Health.



**Elizabeth Salisbury-Afshar, M.D., M.P.H.,**

is a physician certified in family medicine, addiction medicine, and preventive medicine (public health). She is an expert in opioid-related epidemiology, policy, public health intervention, and treatment. Past roles include serving as medical director of behavioral health systems Baltimore and medical director of behavioral health at the Chicago Department of Public Health. Elizabeth's main focus is supporting data-driven decision making and disseminating evidence-based practice. In August of 2018, Elizabeth transitioned into a new role as the director of the Center for Multi-System Solutions to the Opioid Epidemic at American Institutes for Research (AIR). Elizabeth continues to see patients on a part-time basis and provides primary care and addiction treatment services.

# SCIENTIFIC PROGRAM

## Track Key

- 1** Addiction Psychiatry
- 2** Administrative Psychiatry
- 3** Community Psychiatry
- 4** Diversity and Health Equity
- 5** Integrated and Collaborative Care
- 6** Psychopharmacology
- 7** Technology (EHR, Telepsychiatry, Apps)
- 8** Wellness
-  Bring Your Own Device

## 8:00 a.m. Sessions

### Forum

**The Interdepartmental Serious Mental Illness Coordinating Committee (ISMICC)—Transforming the U.S. Mental Health System Through Federal Leadership: Next Steps**

**3**

8:00 a.m. - 9:30 a.m.  
Adams, Sixth Floor  
Palmer House Hilton

#### Chairs:

*Kenneth Minkoff, M.D.*  
*Saul Levin, M.D., M.P.A.*

#### Presenters:

*Brian Matthew Hepburn, M.D.*  
*Joseph John Parks, M.D.*  
*Clayton Chau, M.D., Ph.D.*  
*Anita Everett, M.D.*

### Lecture

**Mental Illness and Gun Violence in the United States: Facts and Messaging Tips for Psychiatrists**

8:00 a.m. - 9:30 a.m.  
Empire, Lobby Level  
Palmer House Hilton

#### Lecturer:

*Marc W. Manseau, M.D., M.P.H.*

## Workshops

**Advocating for Physician Well-Being: A Leadership Role for Psychiatrists**

8:00 a.m. - 9:30 a.m.  
Honore, Lobby Level  
Palmer House Hilton

#### Chairs:

*Richard Fredric Summers, M.D.*  
*Rashi Aggarwal, M.D.*

#### Presenters:

*Carol Ann Bernstein, M.D.*  
*Julie A. Chilton, M.D.*  
*Matthew Louis Goldman, M.D., M.S.*

**Are We Racist? Examining Racial and Ethnic Bias in Psychiatric Evaluations in AOT**

**3**

8:00 a.m. - 9:30 a.m.  
Salon 3, Third Floor  
Palmer House Hilton

#### Chair:

*Myla Harrison, M.D.*

#### Presenters:

*William A. Fisher, M.D.*  
*Serena Yuan Volpp, M.D., M.P.H.*  
*Scott M. Soloway, M.D.*  
*Samantha Aaron, M.P.H.*

**Real World Experiences in an Unreal World: Psychiatry and Climate Change**

*American Association of Community Psychiatrists*

**3**

8:00 a.m. - 9:30 a.m.  
Grant Park Parlor, Sixth Floor  
Palmer House Hilton

#### Chair:

*David Alan Pollack, M.D.*

#### Presenters:

*Asim A. Shah, M.D.*  
*Ayana Jordan, M.D., Ph.D.*  
*Carissa Caban-Aleman, M.D.*  
*David Alan Pollack, M.D.*

**Strengthening Mental Health in Appalachia: Confronting the Health Care Challenges of Rural America**  
*APA Public Psychiatry Fellowship*

**4**

8:00 a.m. - 9:30 a.m.  
Salon 5/8, Third Floor  
Palmer House Hilton

#### Chair:

*John F. Chaves, M.D.*

#### Presenters:

*James Lamont Griffith, M.D.*  
*R. Lawrence Merkel, M.D.*  
*Vabren L. Watts, Ph.D.*  
*Sejal Patel*

## Special Session

**Primary Care Skills for the Psychiatrist**

**5**

8:00 a.m. - 11:00 a.m.  
Salon 2, Third Floor  
Palmer House Hilton

#### Chair:

*Jeffrey T. Rado, M.D.*

#### Presenters:

*Aniyizhai Annamalai, M.D.*  
*Lydia A. Chwastiak, M.D., M.P.H.*  
*Alyson Myers, M.D.*  
*Mary Beth Alvarez*

## Symposia

**Black Mental Health in the 21<sup>st</sup> Century**

**4**

8:00 a.m. - 11:00 a.m.  
Wabash Room, Third Floor  
Palmer House Hilton

#### Chair:

*Altha J. Stewart, M.D.*

#### Presenters:

*Donna Marie Norris, M.D.*  
*Billy Emanuel Jones, M.D.*  
*Carl Compton Bell, M.D.*  
*Helena B. Hansen, M.D., Ph.D.*

Program changes are posted each day in the APA Meetings App. Please see the app for the definitive program.



# SCIENTIFIC PROGRAM

## Immigration and Mental Health

**4**

8:00 a.m. - 11:00 a.m.

Salon 12, Third Floor  
Palmer House Hilton

### Chair:

*Falisha Marie Gilman, M.D.*

### Presenters:

*Andres Barkil-Oteo, M.D., M.Sc.*

*Michelle Silva, Psy.D.*

*Marco Ramos*

*Kashif Ahmed*

### Discussant:

*Esperanza Diaz, M.D.*

## Courses

Courses require advance registration and an additional registration fee. Course descriptions are available in the APA Meetings App. Attendees can enroll in courses at Registration, Exhibit Hall, Fourth Floor, Palmer House Hilton. Admission to all courses is by course enrollment only.

## Pediatric Psychopharmacology

**6**

8:00 a.m. - Noon

Crystal Room, Third Floor  
Palmer House Hilton

### Director:

*John T. Walkup, M.D.*

### Faculty:

*Thomas K. Cummins, M.D.*

*Julie Sadhu*

*Rachel R. Ballard, M.D.*

*Nicholas M. Hatzis, M.D.*

## Transgender Mental Health 101

*Association of Gay and Lesbian Psychiatrists*

**4**

8:00 a.m. - Noon

Monroe, Sixth Floor  
Palmer House Hilton

### Director:

*Eric Yarbrough, M.D.*

### Faculty:

*Sarah C. Noble, D.O.*

*Amir K. Ahuja, M.D.*

*Gilbert A. Smith, D.O.*

*Angeliki Pesiridou, M.D.*

## 10:00 a.m. Sessions

### Forum

## Creating Your Voice: A Guide to Publishing in *Psychiatric Services* and the *Community Mental Health Journal*

**3**

10:00 a.m. - 11:30 a.m.

Salon 4/9, Third Floor  
Palmer House Hilton

### Chair:

*Lisa Dixon, M.D.*

### Presenter:

*Jacqueline M. Feldman, M.D.*

## Workshops

## Buprenorphine Update and Evolving Standards of Care

*Council on Addiction Psychiatry*

**1 5**

10:00 a.m. - 11:30 a.m.

Salon 3, Third Floor  
Palmer House Hilton

### Chair:

*John A. Renner, M.D.*

### Presenters:

*Andrew John Saxon, M.D.*

*Petros Levounis, M.D.*

## Comparing Interventions to Achieve Mental Health Equity at the Local Level: Telepsychiatry Versus Collaborative Care

**3 4**

10:00 a.m. - 11:30 a.m.

Grant Park Parlor, Sixth Floor  
Palmer House Hilton

### Chairs:

*Arkaprava Deb, M.D., M.P.A., M.P.H.*

*Stephanie Le Melle, M.D., M.S.*

### Presenters:

*Sasidhar Gunturu, M.D.*

*Ludwing Alexis Florez Salamanca, M.D.*

*Vijal Parikh, D.O.*

*Rishi Sawhney, M.D.*

## “I Can’t Get No Satisfaction”: Creating Meaning in Our Work as Psychiatrists

*American Association of Community Psychiatrists*

**3**

10:00 a.m. - 11:30 a.m.

Honore, Lobby Level  
Palmer House Hilton

### Chair:

*Peter L. Chien, M.D.*

### Presenters:

*William Chandler Torrey, M.D.*

*John M. Santopietro, M.D.*

## Women Physicians: Wellness and Burnout in the Time of #MeToo and #Timesup

*M/UR Caucus of Women Psychiatrists*

**8**

10:00 a.m. - 11:30 a.m.

Salon 5/8, Third Floor  
Palmer House Hilton

### Chair:

*Kathleen A. Crapanzano, M.D.*

### Presenters:


*Carine M. Nzodom, M.D.*

*Rumneet K. Kullar, D.O.*

*Eva Marina Mathews, M.D., M.P.H.*

*Lauren A. Mulligan, M.D.*

## Track Key

- 1** Addiction Psychiatry
- 2** Administrative Psychiatry
- 3** Community Psychiatry
- 4** Diversity and Health Equity
- 5** Integrated and Collaborative Care
- 6** Psychopharmacology
- 7** Technology (EHR, Telepsychiatry, Apps)
- 8** Wellness
-  Bring Your Own Device

Program changes are posted each day in the APA Meetings App. Please see the app for the definitive program.





# SCIENTIFIC PROGRAM

## 10:30 a.m. Session

### Poster Session

#### Poster Session 2

10:30 a.m. - Noon  
Exhibit Hall, Fourth Floor  
Palmer House Hilton

## 1:00 p.m. Sessions

### Forums

#### Physician Wellness and Burnout: A Town Hall Discussion With APA Leadership

8

1:00 p.m. - 2:30 p.m.  
Salon 3, Third Floor  
Palmer House Hilton

**Chair:**  
*Richard Fredric Summers, M.D.*

**Presenters:**  
*Saul Levin, M.D., M.P.A.*  
*Altha J. Stewart, M.D.*

#### Transpeople in the Military: Mental Health Concerns for Active Duty and Veterans and the Impact of Being Allowed to Serve Openly

*Association of Gay and Lesbian Psychiatrists*

1:00 p.m. - 2:30 p.m.  
Salon 6/7, Third Floor  
Palmer House Hilton

**Chairs:**  
*Amir K. Ahuja, M.D.*  
*Eric Yarbrough, M.D.*

**Presenters:**  
*Shane Ortega*  
*Paula Neira*

### Lectures

#### From Cultural to Structural Competency: Training Psychiatry Residents to Act on Social Determinants of Health and Institutional Racism

4

1:00 p.m. - 2:30 p.m.  
Wabash Room, Third Floor  
Palmer House Hilton

**Chair:**  
*Helena B. Hansen, M.D., Ph.D.*

**Lecturers:**  
*Enrico Guanzon Castillo, M.D.*  
*Nichole I. Goodsmith, M.D., Ph.D.*  
*Isabella Morton, M.D., M.P.H.*

#### Overcoming Disparities in Mental Health Services by Making Culture Count

*Health Services Research Award*

3 4

1:00 p.m. - 2:30 p.m.  
Empire, Lobby Level  
Palmer House Hilton

**Chair:**  
*Grayson Swayze Norquist, M.D.*

**Lecturer:**  
*Roberto Lewis-Fernández, M.D.*

**Discussant:**  
*Sonya Gabrielian, M.D.*

#### The Balancing Act: Women Psychiatrists

1:00 p.m. - 2:30 p.m.  
Honore, Lobby Level  
Palmer House Hilton

**Chair:**  
*Carolyn Bauer Robinowitz, M.D.*

**Lecturer:**  
*Carol Ann Bernstein, M.D.*

### Workshop

#### Certified Community Behavioral Health Centers at One-Year: A Panel Discussion of the First Year of Achievements and Challenges

*American Association of Community Psychiatrists*

2 3

1:00 p.m. - 2:30 p.m.  
Salon 12, Third Floor  
Palmer House Hilton

**Chair:**  
*Joseph John Parks, M.D.*

### Learning Lab

#### Ethics in Real Time: Learning Through Simulation

1:00 p.m. - 4:00 p.m.  
Salon 2, Third Floor  
Palmer House Hilton

**Chair:**  
*Rebecca Weintraub Brendel, M.D., J.D.*

### Symposium

#### People With Mental Illness in the Criminal Justice System: Answering a Cry for Help

3

1:00 p.m. - 4:00 p.m.  
Adams, Sixth Floor  
Palmer House Hilton

**Chair:**  
*Kenneth Minkoff, M.D.*

**Presenters:**  
*Fred Charles Osher, M.D.*  
*Jacqueline M. Feldman, M.D.*  
*Stephanie Le Melle, M.D., M.S.*

Program changes are posted each day in the APA Meetings App. Please see the app for the definitive program.



# SCIENTIFIC PROGRAM

## Courses

Courses require advance registration and an additional registration fee. Course descriptions are available in the APA Meetings App. Attendees can enroll in courses at Registration, Exhibit Hall, Fourth Floor, Palmer House Hilton. Admission to all courses is by course enrollment only.

### 2018 Psychiatry Review and Clinical Synthesis

2

1:00 p.m. - 5:00 p.m.  
Crystal Room, Third Floor  
Palmer House Hilton

#### Directors:

*Philip R. Muskin, M.D., M.A.*  
*Tristan Gorrindo, M.D.*

#### Faculty:

*Ilse R. Wiechers*  
*MaryBeth Lake*

### Good Psychiatric Management for Borderline Personality Disorder

1:00 p.m. - 5:00 p.m.  
Monroe, Sixth Floor  
Palmer House Hilton

#### Director:

*Brian A. Palmer, M.D., M.P.H.*

#### Faculty:

*Victor Hong, M.D.*  
*John Gunder Gunderson, M.D.*

## Special Session

### Integrating Behavioral Health and Primary Care: Practical Skills for the Consulting Psychiatrist

5

1:00 p.m. - 5:00 p.m.  
Salon 5/8, Third Floor  
Palmer House Hilton

#### Faculty:

*Anna Ratzliff, M.D., Ph.D.*  
*John Sheldon Kern, M.D.*

## Track Key

- 1 Addiction Psychiatry
- 2 Administrative Psychiatry
- 3 Community Psychiatry
- 4 Diversity and Health Equity
- 5 Integrated and Collaborative Care
- 6 Psychopharmacology
- 7 Technology (EHR, Telepsychiatry, Apps)
- 8 Wellness
- Bring Your Own Device

## 1:30 p.m. Session

### Poster Session

#### Poster Session 3

1:30 p.m. - 3:00 p.m.  
Exhibit Hall, Fourth Floor  
Palmer House Hilton

## 3:00 p.m. Sessions

### Lectures

#### Clinicians and Managers in Structural Conflict: How Can We Share the Triple Aim?

2 3

3:00 p.m. - 4:30 p.m.  
Wabash Room, Third Floor  
Palmer House Hilton

#### Lecturer:

*Hunter L. McQuiston, M.D.*

#### Discussants:

*Kenneth Stewart Thompson, M.D.*  
*Barbara Linder*  
*Ashley M. Overley, M.D.*

#### The Psychiatrist's Role in Addressing the Opioid Crisis

1

3:00 p.m. - 4:30 p.m.  
Salon 3, Third Floor  
Palmer House Hilton

#### Lecturer:

*Elizabeth Salisbury-Afshar, M.D., M.P.H.*

## Workshops

### A Conversation on Diversity

4 8

3:00 p.m. - 4:30 p.m.  
Empire, Lobby Level  
Palmer House Hilton

#### Chairs:

*Vabren L. Watts, Ph.D.*  
*Ranna I. Parekh, M.D.*

#### Presenters:

*Eric Yarbrough, M.D.*  
*Ruth S. Shim, M.D., M.P.H.*  
*Altha J. Stewart, M.D.*  
*Saul Levin, M.D., M.P.A.*

### Coming Out of the Closet: LGBTQ Education in Medical School and Residency Training

*Association of Gay and Lesbian Psychiatrists*

4

3:00 p.m. - 4:30 p.m.  
Salon 4/9, Third Floor  
Palmer House Hilton

#### Chairs:

*Neeral K. Sheth, D.O.*  
*Max Alan Lichtenstein, M.D.*

#### Presenters:

*Stephen Mark Goldfinger, M.D.*  
*Marshall Forstein, M.D.*  
*David R. Beckert, M.D.*  
*Pratik Bahekar, M.B.B.S.*  
*Nhut Giuc Tran, M.D.*

### Race From Our Past: How the History of Psychiatry Creates a Present Legacy of Racism in Clinical Practice

4

3:00 p.m. - 4:30 p.m.  
Honore, Lobby Level  
Palmer House Hilton

#### Chairs:

*Sonya Shadravan, M.D.*  
*Sir Norman Melancon*

#### Presenters:

*Sarah Yvonne Vinson, M.D.*  
*Kimberly Ashby*  
*Ann Crawford-Roberts, M.D.*

# SCIENTIFIC PROGRAM

## LECTURER BIOS



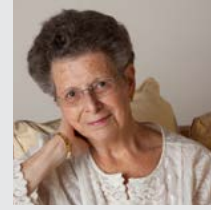
### **Lauren Carson,**

an Atlanta native and University of Virginia alumna, is the executive director and founder of Black Girls Smile, Inc., a nonprofit organization dedicated to promoting positive mental health education, resources, and support. Through her work with Black Girls Smile, Inc. and as a mental health advocate and speaker, Lauren is currently a contributing blogger for the *Huffington Post* and has been featured in *Refinery 29*, *HERS Magazine*, and *Atlanta Blackstar*. She was also featured as a panelist at the 2016 Clinton Global Initiative University and spoke at SXSW 2017. Lauren continues to lend her voice and platform to mental health awareness and empowerment of women and girls. She is most proudly the daughter of Dr. Eric and Martha Carson and big sister to Charlyne, Kia, and Eric Carson!



### **Brian R. Sims, M.D.,**

is the senior director of medical and behavioral health for the National Association of State Mental Health Program Directors. He is also a senior consultant for the National Center for Trauma-Informed Care (NCTIC), where he provides lectures and trainings both nationally and internationally on the practice of trauma-informed care and the neurobiology of trauma, emphasizing trauma's effects on the brain and child development. Most recently, he has been the lead consultant for trauma-informed care in the faith-based community. Dr. Sims is a former staff psychiatrist with Correctional Mental Health Services. Dr. Sims served with the state mental health system for 25 years before retiring, as well as maintaining a private practice for 10 years. Dr. Sims has also served in the U.S. Army Reserves at Walter Reed, working with soldiers with PTSD during drill times.



### **Nada Stotland, M.D., M.P.H.,**

has been a consultation-liaison psychiatrist specializing in women's health, a residency training director, the chair of psychiatry in a large community hospital, and medical coordinator of the State of Illinois Department of Mental Health. She brings perspectives from her own education, ranging from psychoanalytic training to a degree in public health, and from decades of clinical practice. She has addressed women's health issues on Oprah (and Bill O'Reilly) and in the *New York Times*, testified in both houses of Congress and in state courts, and has written or edited five books and over 75 chapters and articles related to women's health. She served as the president of the North American Society for Psychosocial Obstetrics and Gynecology, the Association of Women Psychiatrists, and the American Psychiatric Association. Her career experiences have been greatly enriched by her life experience as the mother of four daughters.

# SCIENTIFIC PROGRAM

## LECTURER BIOS



### Agnes Whitaker, M.D.,

has been engaged in both clinical service and research in the division of child psychiatry at Columbia for three decades. Her clinical work has focused on the mental health care of children, adolescents, and adults with developmental disabilities; she is especially interested in supervising and assisting trainees with the evaluation and treatment of complex clinical issues that involve developmental, medical, and psychiatric factors. Her research has focused on the relation of early brain injury to psychiatric disorder later in life as revealed by long-term longitudinal studies of low birthweight/premature infants. She is co-director of the Whitaker Scholar Program for junior faculty career development in the area of autism and developmental disabilities.

## 8:00 a.m. Sessions

### Forum

#### Inside the APA Town Hall

**1**

8:00 a.m. - 9:30 a.m.  
Salon 12, Third Floor  
Palmer House Hilton

#### Chair:

*Altha J. Stewart, M.D.*

#### Presenters:

*Saul Levin, M.D., M.P.A.*  
*James Robert Batterson, M.D.*

## Lectures

#### Health Economics 101

**2**

8:00 a.m. - 9:30 a.m.  
Wabash Room, Third Floor  
Palmer House Hilton

#### Lecturer:

*Patrick S. Runnels, M.D.*

#### Women's Mental Health: News You Can Use

8:00 a.m. - 9:30 a.m.  
Empire, Lobby Level  
Palmer House Hilton

#### Lecturer:

*Nada Logan Stotland, M.D., M.P.H.*

## Workshop

#### Psychiatry Resident Training in the Correctional System: Overcoming Barriers and Increasing Interest Among Trainees

8:00 a.m. - 9:30 a.m.  
Grant Park Parlor, Sixth Floor  
Palmer House Hilton

#### Chair:

*Elizabeth B. Ford*

#### Presenters:

*Sarah Kauffman*  
*Megan Elizabeth Pruetto, M.D.*  
*Cara Angelotta*

## Learning Lab

#### Microaggressions, Macroeffects: Navigating Power and Privilege in Psychiatry

**4**

8:00 a.m. - 11:00 a.m.  
Crystal Room, Third Floor  
Palmer House Hilton

#### Chairs:

*Kimberly A. Gordon-Achebe, M.D.*  
*Michaela Y. Beder, M.D.*

#### Presenters:

*Megan Elizabeth Baker, M.D.*  
*John F. Chaves, M.D.*  
*Bhinna Pearl Park, M.D.*  
*Shadé Miller, M.D.*  
*Cassandra Raphaël, M.D., M.P.H.*  
*Neal Goldenberg, M.D., M.P.H.*

## Symposia

#### Addressing Social Determinants and Health Disparities Using Technology

**4 7**

8:00 a.m. - 11:00 a.m.  
Honore, Lobby Level  
Palmer House Hilton

#### Chair:

*John Torous, M.D.*

#### Presenters:

*Dominika A. Winiarski, Ph.D.*  
*Liza Hoffman, L.C.S.W., M.S.W.*  
*Kunmi Sobowale, M.D.*  
*David Mohr, Ph.D.*  
*Niranjana S. Karnik, M.D., Ph.D.*  
*Keris Jän Myrick, M.B.A., M.S.*

#### Discussant:


*Anita Everett, M.D.*

Program changes are posted each day in the APA Meetings App. Please see the app for the definitive program.



# SCIENTIFIC PROGRAM

## Track Key

- 1** Addiction Psychiatry
- 2** Administrative Psychiatry
- 3** Community Psychiatry
- 4** Diversity and Health Equity
- 5** Integrated and Collaborative Care
- 6** Psychopharmacology
- 7** Technology (EHR, Telepsychiatry, Apps)
- 8** Wellness
-  Bring Your Own Device

### I See You: Dismantling Stigma in Communities of Color

**4**

8:00 a.m. - 11:00 a.m.  
Salon 4/9, Third Floor  
Palmer House Hilton

**Chair:**  
*Glenda L. Wrenn, M.D.*

**Presenters:**  
*Darin Latimore, M.D.*  
*Ruth S. Shim, M.D., M.P.H.*  
*Rhonda M. Mattox, M.D.*  
*Lucy Ogbu-Nwobodo, M.D., M.S.*

### Utilizing Collaborative Data-Sharing to Understand How Psychiatric Diagnoses Predict Emergency Department Use, Inpatient Admissions, and Cost of Care

**3 5**

8:00 a.m. - 11:00 a.m.  
Salon 1, Third Floor  
Palmer House Hilton

**Chair:**  
*Brian Don*

**Presenters:**  
*Jeffrey C. Eisen, M.D., M.B.A.*

### Why Psychiatry Is Essential to Suicide Prevention in Health Care Systems

*American Association for Emergency Psychiatry*

**5**

8:00 a.m. - 11:00 a.m.  
Salon 5/8, Third Floor  
Palmer House Hilton

**Chair:**  
*Michael Hall Allen, M.D.*

**Presenters:**  
*Michael Hogan, Ph.D.*  
*Michael Schoenbaum*  
*Richard McKeon, Ph.D., M.P.H.*  
*Anna Ratzliff, M.D., Ph.D.*  
*Jean Scallon, M.A.*

**Discussants:**  
*Jane Pearson*  
*Julie Goldstein Grumet*

## Course

### Marijuana and Mental Health

**1**

8:00 a.m. - Noon  
Monroe, Sixth Floor  
Palmer House Hilton

**Director:**  
*Thida Myo Thant, M.D.*

**Faculty:**  
*Marc W. Manseau, M.D., M.P.H.*  
*Erica Kirsten Rapp, M.D.*  
*Taylor Mac Black, M.D.*  
*Laura F. Martin, M.D.*  
*Matthew R. Shirazi, M.D., M.S.*

## 10:00 a.m. Sessions

### Forum

### Supporting Medical Directors in Behavioral Health Clinics

**2**

10:00 a.m. - 11:30 a.m.  
Grant Park Parlor, Sixth Floor  
Palmer House Hilton

**Chair:**  
*Saul Levin, M.D., M.P.A.*

## Lectures

### Problem Behavior in Autism Spectrum Disorder: What Is the Psychiatrist's Role?

*Frank J. Menolascino Award*

**5**

10:00 a.m. - 11:30 a.m.  
Salon 6/7, Third Floor  
Palmer House Hilton

**Chair:**  
*Kelly McGuire Morton, M.D., M.P.A.*

**Lecturer:**  
*Agnes Whitaker, M.D.*

### Road to Wellness: An African American Female's Journey

**4**

10:00 a.m. - 11:30 a.m.  
Salon 12, Third Floor  
Palmer House Hilton

**Chair:** *Ranna Parekh, M.D., M.P.H.*

**Lecturer:** *Lauren Carson*

## Workshop

### Helping the Helpers: Understanding Vicarious Traumatization and Burnout

10:00 a.m. - 11:30 a.m.  
Salon 3, Third Floor  
Palmer House Hilton

**Chairs:**  
*Mayumi Okuda, M.D.*  
*Rosa Regincos*

**Presenters:**  
*Elizabeth M. Fitelson, M.D.*  
*Tatyana Pena*  
*Ladan Shaikh, M.D.*  
*Obianuju Jennifer Berry, M.D., M.P.H.*

## 10:30 a.m. Session

### Poster Session

#### Poster Session 4

10:30 a.m. - Noon  
Exhibit Hall, Fourth Floor  
Palmer House Hilton

# SCIENTIFIC PROGRAM

## 1:00 p.m. Sessions

### Lecture

**Influencing Health Outcomes With Trauma-Informed Care: Healing IN Communities**

1:00 p.m. - 2:30 p.m.  
Salon 12, Third Floor  
Palmer House Hilton

**Lecturer:**  
*Brian R. Sims, M.D.*

### Workshops

**Addressing the Social Determinants of Mental Health: Expanding Recovery From Individuals to Society**

**3 4**

1:00 p.m. - 2:30 p.m.  
Honore, Lobby Level  
Palmer House Hilton

**Chair:**  
*Helena B. Hansen, M.D., Ph.D.*

**Discussants:**  
*Seeba Anam, M.D.*  
*Ruth S. Shim, M.D., M.P.H.*  
*Marc W. Manseau, M.D., M.P.H.*  
*Jeffrey C. Eisen, M.D., M.B.A.*

**Cycloid Psychosis: The Subjective Experience and Objective Data**

1:00 p.m. - 2:30 p.m.  
Grant Park Parlor, Sixth Floor  
Palmer House Hilton

**Presenters:**  
*Carolyn S. Furdek, D.P.T.*  
*Rif S. El-Mallakh, M.D.*

**Social Justice and Resident Recruitment: Making Equity, Diversity, and Inclusion a Reality in Training Programs**  
*Council on Minority Mental Health and Health Disparities*

**4**

1:00 p.m. - 2:30 p.m.  
Salon 4/9, Third Floor  
Palmer House Hilton

**Chairs:**  
*Nicolas E. Barcelo, M.D.*  
*Uchenna Barbara Okoye, M.D., M.P.H.*

**Presenters:**  
*Rene Salazar*  
*Lynn Gordon*  
*Nichole I. Goodsmith, M.D., Ph.D.*  
*Sonya Shadravan, M.D.*  
*Maria Gabriela Aguilera Nunez, M.D.*

### Learning Lab

**You Are Human: Addressing Burnout Through Improv**

**8** 

1:00 p.m. - 4:00 p.m.  
Salon 6/7, Third Floor  
Palmer House Hilton

**Chair:**  
*Ashley Whitehurst*

**Presenter:**  
*Tristan Gorrindo, M.D.*

### Symposia

**Toxicology 450 or How I Learned to Stop Worrying and Manage Psychotropic Toxicities**

**6**


1:00 p.m. - 4:00 p.m.  
Wabash Room, Third Floor  
Palmer House Hilton

**Chair:**  
*Deepak Alapati, M.B.B.S., M.P.H.*

**Presenters:**  
*Joseph J. Rasimas, M.D.*  
*Travis D. Olives, M.D., M.P.H.*

**Discussant:**  
*Cynthia Di Giandomenico, M.D.*

## Track Key

- 1** Addiction Psychiatry
- 2** Administrative Psychiatry
- 3** Community Psychiatry
- 4** Diversity and Health Equity
- 5** Integrated and Collaborative Care
- 6** Psychopharmacology
- 7** Technology (EHR, Telepsychiatry, Apps)
- 8** Wellness
-  Bring Your Own Device

**Trauma-Informed Care of the Transgender Patient: A Primer for Community Psychiatrists**  
*Council on Minority Mental Health and Health Disparities*

**4**

1:00 p.m. - 4:00 p.m.  
Salon 1, Third Floor  
Palmer House Hilton

**Chairs:**  
*Karl Goodkin, M.D., Ph.D.*  
*Ludmila B. De Faria, M.D.*

**Presenters:**  
*Karl Goodkin, M.D., Ph.D.*  
*Ludmila B. De Faria, M.D.*  
*Daena L. Petersen, M.D.*

**Workforce Inclusion: Roadblocks and Relevance of Black Men in Psychiatry**

**4**

1:00 p.m. - 4:00 p.m.  
Empire, Lobby Level  
Palmer House Hilton

**Chairs:**  
*Carl Compton Bell, M.D.*  
*Rahn K. Bailey, M.D.*

**Presenters:**  
*H. Steven M. Starks, M.D.*  
*Phillip Michael Murray, M.D.*  
*Francois Williams*  
*Emanuel Demissie*  
*Norman Harris*  
*Kevin Mauclair Simon, M.D.*  
*Vabren L. Watts, Ph.D.*  
*Altha J. Stewart, M.D.*  
*Ranna I. Parekh, M.D.*

# SCIENTIFIC PROGRAM

## Course

Courses require advance registration and an additional registration fee. Course descriptions are available in the APA Meetings App. Attendees can enroll in courses at Registration, Exhibit Hall, Fourth Floor, Palmer House Hilton. Admission to all courses is by course enrollment only.

### Emergency Psychiatry: The Basics and Beyond

*American Association for Emergency Psychiatry*

1:00 p.m. - 5:00 p.m.  
Crystal Room, Third Floor  
Palmer House Hilton

#### Director:

*Kimberly D. Nordstrom, M.D., J.D.*

#### Faculty:

*Leslie Zun, M.D., M.B.A.*  
*Jon Scott Berlin, M.D.*  
*Scott L. Zeller, M.D.*

## Special Session

### Applying the Integrated Care Approach 201: The Advanced Course in Collaborative Care

**5**

1:00 p.m. - 5:00 p.m.  
Salon 5/8, Third Floor  
Palmer House Hilton

#### Chair:

*John Sheldon Kern, M.D.*

#### Presenters:

*Anna Ratzliff, M.D., Ph.D.*  
*Patricia Ellen Ryan, M.D.*  
*Kristyn Spangler*  
*Jeffrey T. Rado, M.D.*

## 3:00 p.m. Sessions

### Forum

#### SAMHSA Town Hall: Interdepartmental Serious Mental Illness Coordinating Committee (ISMICC) Updates

*U.S. Substance Abuse and Mental Health Services Administration*

**3**

3:00 p.m. - 4:30 p.m.  
Salon 12, Third Floor  
Palmer House Hilton

#### Chair:

*Anita Everett, M.D.*

### Workshop

#### Women Psychiatrists and Money: Personal Practicalities, Payment, Professional Practice, and Power

**2**

3:00 p.m. - 4:30 p.m.  
Honore, Lobby Level  
Palmer House Hilton


#### Chair:

*Sarah Yvonne Vinson, M.D.*

#### Presenters:

*Kasey Gartner*  
*Glenda L. Wrenn, M.D.*  
*Andrea M. Brownridge, M.D., J.D., M.H.A.*  
*Lara Elizabeth Aycock Frye, M.D.*  
*Nzinga Ajabu Harrison, M.D.*

## Track Key

- 1** Addiction Psychiatry
- 2** Administrative Psychiatry
- 3** Community Psychiatry
- 4** Diversity and Health Equity
- 5** Integrated and Collaborative Care
- 6** Psychopharmacology
- 7** Technology (EHR, Telepsychiatry, Apps)
- 8** Wellness
-  Bring Your Own Device

Program changes are posted each day in the APA Meetings App. Please see the app for the definitive program.



# SCIENTIFIC PROGRAM

## LECTURER BIOS



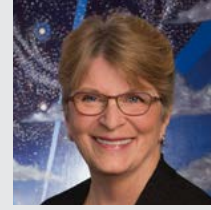
### **Jean-Marie Alves-Bradford, M.D.,**

is the associate director for clinical services and the director of the Washington Heights Community Service (WHCS) at the New York State Psychiatric Institute (NYSPI) and an assistant clinical professor in the department of psychiatry of the College of Physicians and Surgeons at Columbia University. Dr. Alves-Bradford manages inpatient and outpatient behavioral health services in Upper Manhattan and is currently working on expanding integrated care at the WHCS outpatient clinics. Dr. Alves-Bradford also serves as the training director for the Columbia University Global Mental Health T32 Research Fellowship and the co-chair for the Columbia University Department of Psychiatry Committee for Diversity and Inclusion and enjoys teaching and supervising trainees. Dr. Alves-Bradford's professional interests include improving psychiatric care for the severely mentally ill in underserved communities in the U.S. and abroad, teaching, faculty development, and issues of diversity and inclusion.



### **Paul M. Grant, Ph.D.,**

is the primary developer, along with Aaron T. Beck, of recovery-oriented cognitive therapy (CT-R) for individuals diagnosed with schizophrenia. He has coauthored *Schizophrenia: Cognitive Theory, Research and Therapy* and the forthcoming *Recovery-Oriented Cognitive Therapy for Schizophrenia: A Comprehensive Treatment Manual*.



### **Adrienne Kennedy, M.A.,**

retired educator/administrator/researcher, devotes herself to mental health advocacy after profound experiences with mental health issues of family members. As their crises required her fulltime caregiving, she resigned her doctoral candidacy (UT Austin), becoming active with NAMI. Ms. Kennedy champions the redress of disparities in identification, intervention, access to treatment, and the criminal justice system. In 2016, Texas Supreme Court Chief Justice Nathan Hecht appointed Ms. Kennedy as advisor to the Texas Judicial Council. In 2018, Ms. Kennedy was named commissioner to the Texas Judicial Commission on Mental Health, established by the Texas Supreme Court and the Texas Court of Criminal Appeals. Ms. Kennedy continues in NAMI leadership roles: a second term on NAMI's Board of Directors, a strong policy advocate, and a trainer in NAMI's signature programs. In July, she was elected the 2018-19 national president of NAMI by her fellow board members.



# SCIENTIFIC PROGRAM

## LECTURER BIOS



**Keris Jän Myrick, M.S., M.B.A.,**

is discipline chief for peer services for the Los Angeles County Department of Mental Health. She served previously as director of the office of consumer affairs for the Center for Mental Health Services (CMHS), SAMHSA. Ms. Myrick is a leading mental health advocate and executive, known for innovative, inclusive approaches to mental health reform as well as disclosure of her personal story. Ms. Myrick has over 15 years of experience in mental health services innovations, transformation, and peer workforce development. She previously served as president/CEO of Project Return Peer Support Network, a peer-run nonprofit; the president of the National Alliance on Mental Illness (NAMI); and as a consultant to the APA's Office of Minority and National Affairs (OMNA). An author of several peer-reviewed journal articles, Ms. Myrick is an in-demand national trainer and keynote speaker. Ms. Myrick has an M.S. degree (organizational psychology) and an M.B.A. degree (marketing emphasis).

## 8:00 a.m. Sessions

### Lecture

**Disparities Faced by Individuals With Mental Health Problems: Creating Tools and Forging Pathways for Change**

**4**

8:00 a.m. - 9:30 a.m.  
Honore, Lobby Level  
Palmer House Hilton

**Lecturers:**

*Adrienne Kennedy, M.A.*  
*Keris Jän Myrick, M.B.A., M.S.*  
*Paul M. Grant, Ph.D.*

### Workshop

**Increasing Access to Care for Homeless Clients: Clinical Pearls and Models of Care**

**3 5**

8:00 a.m. - 9:30 a.m.  
Salon 4/9, Third Floor  
Palmer House Hilton

**Chair:**

*Michaela Y. Beder, M.D.*

**Presenters:**

*Deborah Anne Pink, M.D.*  
*Anthony J. Carino, M.D.*  
*Joanna Fried, M.D.*

### Media Workshop

**Multicultural Psychiatrists at Work: The Art of Storytelling: *The Human Experience of Being a Psychiatrist* Council on Minority Mental Health and Health Disparities**

**4**

8:00 a.m. - 11:00 a.m.  
Salon 3, Third Floor  
Palmer House Hilton


**Chair:**

*Francis G. Lu, M.D.*

**Presenter:**

*Michelle L. Furuta, M.D.*

## Track Key

- 1** Addiction Psychiatry
- 2** Administrative Psychiatry
- 3** Community Psychiatry
- 4** Diversity and Health Equity
- 5** Integrated and Collaborative Care
- 6** Psychopharmacology
- 7** Technology (EHR, Telepsychiatry, Apps)
- 8** Wellness
-  Bring Your Own Device

## Symposia

**Alternatives to Incarceration for Individuals With Serious Mental Illness: Opportunities and Challenges**

**3**

8:00 a.m. - 11:00 a.m.  
Wabash Room, Third Floor  
Palmer House Hilton

**Chair:**

*Miriam C. Tepper, M.D.*

**Presenters:**

*Sarah Yvonne Vinson, M.D.*  
*Carolyn Gaebler*  
*Madelon Baranoski*  
*Christine E. Montross, M.D.*  
*Louis James Kraus, M.D.*

**The Impact of Environmental Toxicants on Neurodevelopment and Behavior: From Awareness Toward Prevention and Greater Health Equity**

**3 4**

8:00 a.m. - 11:00 a.m.  
Salon 5/8, Third Floor  
Palmer House Hilton

**Chairs:**

*James Lee Fleming, M.D.*  
*Ludmila B. De Faria, M.D.*

**Presenters:**

*Irva Hertz-Picciotto, Ph.D.*  
*Frederica Perera, D.P.H., Ph.D.*  
*Mark Mitchell, M.D., M.P.H.*  
*Aly Cohen, M.D.*

# SCIENTIFIC PROGRAM

## 10:00 a.m. Session

### Workshop

**Tools to Treat Mental Health Needs and Promote Well-Being of African Americans During the Current Political and Social Climate**  
*Council on Minority Mental Health and Health Disparities*

**4 8**

10:00 a.m. - 11:30 a.m.  
 Honore, Lobby Level  
 Palmer House Hilton


**Chairs:**

*Jean-Marie E. Alves-Bradford, M.D.*  
*Carine M. Nzodom, M.D.*

**Presenters:**

*Rahn K. Bailey, M.D.*  
*Kimberly A. Gordon-Achebe, M.D.*  
*Michelle P. Durham, M.D., M.P.H.*  
*Latoya Sheree Comer Frolov, M.D., M.P.H.*

## Track Key

- 1** Addiction Psychiatry
- 2** Administrative Psychiatry
- 3** Community Psychiatry
- 4** Diversity and Health Equity
- 5** Integrated and Collaborative Care
- 6** Psychopharmacology
- 7** Technology (EHR, Telepsychiatry, Apps)
- 8** Wellness
-  Bring Your Own Device

Program changes are posted each day in the APA Meetings App. Please see the app for the definitive program.



# POSTER SESSIONS

## Poster Session

# 1

**THURSDAY, OCTOBER 4**

1:30 p.m.- 3:00 p.m.  
Exhibit Hall, Fourth Floor  
Palmer House Hilton

**P1-001**

What Is “Complexity” in Mental Health and Why Does It Matter? A Review  
*June Sing Hong Lam, M.D.*

**P1-002**

Walk-in Wednesday: An Open Access Psychiatry Model Developed From Lessons Learned Working With LGBTQ Patients  
*Eric Yarbrough, M.D.*

**P1-003**

Perspective of Patients With Serious Mental Illness on Reverse Integration: A Qualitative Study  
*Rachel Melissa Talley, M.D.*

**P1-004**

Frostbite Injuries in Patients With Mental Illness  
*Victoria J. Tann*

**P1-005**

Increasing the Impact of IMPACT on Preventable Health Conditions  
*Shea M. Jorgensen, M.D.*

**P1-006**

Adherence to Psychiatric Care After Compulsory Admission: A Five-Year Longitudinal Study in a Psychiatric Center  
*Chu Wei Tsai*

**P1-007**

Outcomes Related to Mental Health, Public Service Utilization, and Employment Stability Among Iowa City Fairweather Lodge Program Participants  
*Emily E. Morse, D.O.*

**P1-008**

Toward a Home Sweet Home: Provider Perspectives on Improving Services for Homeless Families  
*John Horton*

**P1-009**

Using the Cultural Formulation Interview to Guide the Treatment of a Geriatric Latino Patient With Bipolar II Disorder  
*Victor Manuel Gonzalez, M.D.*

**P1-010**

Intellectual Disability in Indian Cinema: A Narrative Review  
*Balaji Subramanian Srinivasa Sekaran, M.B.B.S.*

**P1-011**

Correctional Mental Health in California and San Diego County: Models of Treatment and Community-Based Recovery  
*Benjamin Carron, M.D.*

**P1-012**

A Grassroots Approach to Health Equity Awareness and Education Through Community Academic Partnerships  
*Carlos Fernandez, M.D.*

**P1-013**

Exploring Exits From Homelessness Among Persons With Serious Mental Illness  
*Sonya Gabrielian, M.D.*

**P1-014**

Remarkably Vulnerable: Comparing Homeless Veterans Who Use Homeless-Specialized Versus Mainstream Primary Care  
*Sonya Gabrielian, M.D.*

**P1-015**

An Analysis of Five Facet Mindfulness Among Veterans: A Pilot Study  
*Jeremy Ramirez*

**P1-016**

Rethinking Violence Prevention in Rural and Underserved Communities: How Veteran Peer Support Groups Can Be Leveraged to Process Trauma  
*Jeremy Ramirez*

**P1-017**

Stockholm Syndrome in a Battered Woman With Schizoaffective Disorder: A Case Report  
*Felix Oscar Priamo Matos, M.D.*

**P1-018**

Male-to-Eunuch Gender Dysphoria With Self-Castration Attempt in a Young Male With Cluster B Personality Organization  
*Lioubov Leontieva, M.D., Ph.D.*

**P1-019**

Conversion Symptoms in the Emergency Room: Diagnostic Challenges and Polypharmacy  
*Allyson J. Kemp, N.P.*

**P1-020**

Community Behavioral Health: Standardization of Depression and Substance Use Assessments, Interventions and Referrals in the Medicaid Population  
*Mollie Judd, M.S.W.*

**P1-021**

The Impact of Autism and Intellectual Disability on the Need for Restraint and Seclusion in Pre-Adolescent Psychiatric Inpatients  
*Elizabeth M. O'Donoghue, B.A.*

**P1-022**

WITHDRAWN

**P1-023**

WITHDRAWN

# POSTER SESSIONS

P1-024

Demographics of Patients With ADHD and Non-Suicidal Self-Injury Behavior Requiring Seclusion and Restraints in an Inpatient Child Psychiatric Hospital  
*Marwa Badawy, M.D.*

P1-025

The Michigan Peer-to-Peer Depression Awareness Campaign: School-Based Prevention to Reduce the Impact of Depression Among Adolescents  
*Danielle S. Taubman, M.P.H.*

P1-026

The Role of Extracellular Matrix Regulation in Synaptic Plasticity and Behavioral Deficits Associated With *Cyfp1* and *Fmr1* Mutations  
*Shivanshu Vijaykumar Shrivastava, M.B.B.S.*

P1-027

Introducing EMR/EHR Prompts for Timely Diagnosis of Autism Spectrum Disorder  
*Ayesha Saleem Adil, M.D.*

P1-028

The Clinical Significance of Unexplained Symptoms  
*Brett Kramer*

P1-029

Outcomes in Older Adults With Schizophrenia  
*Maria Elena Correa, M.D.*

P1-030

Delusional Parasitosis in the Setting of Restless Legs Syndrome  
*Danny Tran, D.O.*

P1-031

WITHDRAWN

P1-032

Promoting Mental Health Awareness in the Christian Community Through Collaboration  
*Claudine Elaine Jones-Bourne, M.D.*



**FRIDAY, OCTOBER 5**

10:30 a.m. - Noon  
Exhibit Hall, Fourth Floor  
Palmer House Hilton

P2-001

Telepsychiatry Assisted Follow Up Engagement of Treatment Dropout Substance Users  
*Raju Bhattarai*

P2-002

Substance Abuse and Antipsychotics, an Inpatient Rehab Retrospective Analysis of Patients Who Sign Out Against Medical Advice  
*Charles Rodolphe Odom, M.D.*

P2-003

Positive Amphetamine Screen in a Credible Patient Who Strongly Denies Use  
*David M. Marshall, M.D.*

P2-004

Pitfalls in Transplantation for Alcoholic Hepatitis  
*Beth Zell, D.O.*

P2-005

Missouri's Response to the Opioid Crisis: Implementation of a "Medication First" Treatment Model  
*Roopa Sethi, M.D.*

P2-006

Varenicline for Smoking Cessation and Reduction in People With Schizophrenia: A Meta-Analysis  
*Saeed Ahmed, M.D.*

P2-007

A Case of Forced Normalization With Emergence of Psychosis  
*Saeed Ahmed, M.D.*

P2-008

Survey of Physician Attitudes Toward Psychogenic Non-Epileptic Seizures and Driving  
*Saeed Ahmed, M.D.*

P2-009

We Miss 100% of the Questions We Don't Ask: Improving Chronic Traumatic Encephalopathy Outcomes  
*Alexander Ghobadimanesh, D.O.*

P2-010

Petit Mal or Thought Blocking? A Case of First-Break Psychosis in a Patient With Absence Seizures  
*Xavier Yang Diao, M.D.*

P2-011

Associations Between STS Gene Polymorphisms and Risk of ADHD: A Meta-Analysis  
*Yang Ao Roby, M.D., Ph.D.*

P2-012

22q11 Deletion Presenting as First Break Psychosis, Severe Hypocalcemia and Bilateral Basal Ganglia Calcifications  
*Ali Maher Haidar, M.D.*

P2-013

WITHDRAWN

P2-014

Barriers to Clozapine Use in the United States of America  
*Saad Wasiq*

P2-015

Lithium-Induced Bradycardia: Sinoatrial Node Dysfunction in an Elderly Muslim Woman With Syncope  
*Therese Woodring*

P2-016

Mindfulness Based CBT With Medication Is Probably More Effective in the Treatment of Generalized Anxiety Disorder in Female Adults (25-30 Years Old)  
*Debanjan Pan, M.D.*

# POSTER SESSIONS

P2-017

WITHDRAWN

P2-018

The Application of a Psychodynamic Model in Understanding and Treating a Diagnostically Ambiguous Patient  
*Noor Anabtawi*

P2-019

Case Report: Clinical Challenges in the Diagnoses and Management of Delirious Mania in a U.S. Veteran With a Mental Health History of Bipolar Disorder  
*Muhammad Ali Zaidi, M.D.*

P2-020

Empirically Derived Decision Trees to Model Risk of 30-Day Readmission for Bipolar Disorder  
*Juliet Edgcomb, M.D., Ph.D.*

P2-021

Repeat Hoarding Behavior in a 75-Year-Old Female Patient  
*Oscar Fernando Plata, M.D.*

P2-022

Refractory Delusional Parasitosis  
*Anthony C. D'Auria*

P2-023

National Survey for Mental Health in Egypt 2016–2017  
*Sally Ibrahim Noby, M.B.B.S.*

P2-024

The Decentralization of the Ghanaian Mental Health System Through the Psychiatric Institution, Prayer Camp, and Non-Profit Sector  
*Opemipo Akerele*

P2-025

Hospicio De Pedro II: A Nineteenth Century Insane Asylum in First Person Accounts  
*Antonio Leandro Carvalho de Almeida Nascimento, M.D.*

P2-026

After the Storm: Community Engagement in Puerto Rico  
*Alan Tomas Rodriguez Penney, M.D.*

P2-027

Mega-Interest in Meta-Analysis  
*Chandresh Shah*

P2-028

Treatment Over Objection: A Comparison Study  
*Sevie Kandefer*

P2-029

Factors Associated With Involuntary Commitment in the Acute Inpatient Unit of an Urban Academic Medical Center  
*Apoorva M. Polavarapu*

P2-030

Behavioral Health—Virtual Patient Navigation: Results From a Pragmatic Research Study Among Patients With a Telepsychiatric Consult in the ED  
*Jason Roberge*

P2-031

Improving Psychiatry Resident Knowledge and Patient Education Practices Regarding Safe Medication Disposal  
*Michael A. Strong, M.D.*

P2-032

Learning to Speak Truth to Power: Developing Advocacy Curricula Across the Spectrum of Psychiatric Training  
*Jacob Michael Izenberg, M.D.*

P2-033

Breaking the Taboo: When Politics Enters the Professional Realm: A Curriculum  
*Meredith Clark, M.D.*

P2-034

Interdisciplinary and Experiential Learning Within the Homeless Community  
*Craig P. Kaufmann, M.D.*

P2-035

Perception of the Quality of Service and Level of Satisfaction Among Outpatients in a Psychiatric Hospital Setting  
*Gbonjubola Babalola, M.B.B.S.*

P2-036

Effective Use of the Interstate Compact: A Case of a 69-Year-Old Male With Mental Illness Who Wandered Off  
*Lionel E. Znaty, M.D.*

P2-037

Ethical Implications of Diagnosing and Treating Psychosis High-Risk Syndromes  
*Ike B. Iloka, M.D.*



**FRIDAY, OCTOBER 5**

1:30 p.m. - 3:00 p.m.  
Exhibit Hall, Fourth Floor  
Palmer House Hilton

P3-001

Financial Management Support for SSA Beneficiaries: Looking Beyond the Payee  
*Annie Harper*

# POSTER SESSIONS

P3-002

Addressing Psychiatric Health Equity in Rural Areas Through Recruitment and Retention Into the Field of Psychiatry  
*Shambhavi Chandraiah, M.D.*

P3-003

Enhancing Cultural Competency in a General Adult Psychiatry Residency Training Program  
*Jennifer Rahman*

P3-004

Bridging Gaps Through a Health Education Program  
*Marissa Emadi*

P3-005

Implicit Racial Biases in Psychiatric Decision-Making in the Emergency Department  
*Katrina Hui, M.D., M.S.*

P3-006

Raíces: A Pilot Parental Support Group Aimed at Improving Mental Health Outcomes Among Latina Adolescents  
*Paloma Lucia Reinoso*

P3-007

Promoting Mental Health Equity Within the South Asian Community: A Survey Assessing Current Practices Among PCPs  
*Simran Brar, M.D.*

P3-008

WITHDRAWN

P3-009

AOT: Are Providers Less Sensitive When Prescribing a Mandated Treatment, Which Risks Making Patient Wonder “Am I Being Punished?”  
*Harjasleen Bhullar Yadav, M.B.B.S.*

P3-010

Pre-Visit Engagement as a Way of Decreasing No-Show Rate to Integrated Psychiatry Appointments in Large Primary Care Settings: A Proposal  
*Stephen Paul Ferber, M.D.*

P3-011

Federal Agencies Partnering to Address Mental Health Disparities  
*Andrea Horvath Marques, M.D., Ph.D., M.P.H.*

P3-012

Smoking Cessation and Serious Mental Illness: A Shared Priority for Primary Care and Psychiatry With the Greatest Potential to Reduce Mortality  
*Sarah A. MacLaurin*

P3-013

How to Help Psychiatric Patients Get the Care They Need: A Review of NYS Medicaid Programs That Reduce Costs and Increase Access to Care  
*Manisha Vijayaraghavan*

P3-014

How to Start an ECHO Psychiatry Training Clinic for Primary Care Providers: The Oregon Story  
*Jonathan P. Betlinski, M.D.*

P3-015

The Impact of Medicaid Health Homes on the Service Use of Beneficiaries With Serious Mental Illness  
*Michael Flores*

P3-016

WITHDRAWN

P3-017

Preventing Psychiatrist Burnout: Balancing Altruism and Self-Care  
*Robert E. Garza, M.D.*

P3-018

Community and Global Psychiatry Case Conference: An Innovative Psychiatry Residency Initiative to Address the Social Determinants of Mental Health  
*Gregory Gabrellas, M.D., M.A.*

P3-019

Empathy Across Difference: Discussing Our Identities as Psychiatrists  
*Rita Ouseph, M.D.*

P3-020

NCAA Division I Coaches' Experiences With Mental Health Issues in Student Athletes?  
*Pratik Ashok Mehta, M.D.*

P3-021

Intimate Partner Violence in America  
*Rahn K. Bailey, M.D.*

P3-022

Firearm Violence in America: A National Plague  
*Rahn K. Bailey, M.D.*

P3-023

Studying Mental Health Through Multimodal Analysis of Social Media Data  
*Amir Yazdavar*

P3-024

Prediction of Adolescent Suicidal Behavior Using Machine Learning With Electronic Health Records  
*Nicholas Carson, M.D.*

P3-025

“Body and Mind” Integrating Physical Activity Into Outpatient Mental Health Services  
*Jayanta Chowdhury, M.D.*

P3-026

Treatment Considerations in Managing Unplanned Pregnancies in Bipolar Patients  
*Avanti Puri*

# POSTER SESSIONS

P3-027

Facebook Ads to Recruit Military Veterans: Reaching Those At-Risk for Psychiatric Disorders and Suicidal Ideation  
*Alan R. Teo, M.D.*

P3-028

Patient Perceptions of Care: Telepsychiatry Compared to Face to Face Care in PHP in a Rural Setting  
*Simha Esther Ravven, M.D.*

P3-029

Providing Computerized Cognitive Behavior Therapy Directly to Employees: Uptake and Outcomes From a Multi-Company Rollout  
*Kristin S. Budde, M.D., M.P.H.*

P3-030

FDA Approval for Digital Diagnostics and Therapeutics  
*Kristin S. Budde, M.D., M.P.H.*

P3-031

Text4MMH (Text for Mother's Mental Health): Evaluating the Use of Text Messaging to Screen and Inform New Mothers About Mental Health Issues  
*Ariel K. Dalfen, M.D.*

P3-032

Ketamine and Mindfulness Therapy in PTSD Treatment  
*Esther Bilenkis, D.O.*

P3-033

Health Advocacy, Communication, and Teamwork (ACT): Toward More Seamless Integration of Behavioral Health Into Primary Care  
*Abigail S. Greene*

P3-034

Assessing Barriers to Mental Health Care and the Necessity of Mental Health Screening in Mobile, Alabama  
*Peter Y. Lee*

P3-035

The Behavioral Health Outreach Program at the USD Coyote Clinic  
*Erik Burnison*

P3-036

FIT Clinic Peer Support Group, Year Two: Easing the Burden of Reentry in Louisiana  
*Zachary Lenane, M.D., M.P.H.*



**SATURDAY, OCTOBER 6**

10:30 a.m. - Noon

Exhibit Hall, Fourth Floor

Palmer House Hilton

P4-001

Features Increasing Suspicion for Prodromal Psychosis: A Case Study  
*Zane He*

P4-002

Pathways to Care for Young Adults With First-Episode Psychosis in a Coordinated Specialty Care Program  
*Leslie Marino, M.D., M.P.H.*

P4-003

Olanzapine and Lorazepam Used in the Symptomatic Treatment of Excited Catatonia Secondary to Anti-NMDA Receptor Encephalitis  
*Michael Bliss, D.O.*

P4-004

Treatment Outcomes of Patients With Severe Schizophrenia in a Comprehensive, Case Managed Program: A Seven-Year Follow-Up  
*Sylvia Díaz*

P4-005

Outcomes of a Case Managed Community Based Treatment in the Prevention of Suicide Among People With Severe Schizophrenia  
*Sylvia Díaz*

P4-006

Decoding Psychotic Images Through Art Psychotherapy and Exploration of Potential Application of Virtual Reality  
*Mani Yavi*

P4-007

Use of Second-Generation Long-Acting-Injectable Antipsychotics and People With Severe Schizophrenia Suicide Behavior Prevention  
*Juan J. Fernandez-Miranda*

P4-008

One-Year Follow-Up Paliperidone Palmitate Every 3 Months Versus PP1M. Effectiveness, Tolerability and Satisfaction in People With Severe Schizophrenia  
*Juan J. Fernandez-Miranda*

P4-009

Coprophagia—a Rare Psychiatric Symptom and Possible Treatment Options: A Case Report  
*Nilesh Dialani*

P4-010

Orphan Patients: A Case Series of Patients With Treatment-Resistant Psychosis Requiring Alternatives to Clozapine  
*Simon M. Bow, M.D.*

P4-011

"You Are Not My Sister": The Challenges of Managing and Safely Discharging a Patient With Dementia and Capgras Syndrome  
*Teresa E. Mathew, M.D.*

P4-012

Clinical Issues in Management of a Pregnant Psychotic Patient  
*Teresa E. Mathew, M.D.*

# POSTER SESSIONS

P4-013

Treatment of Risperidone-Induced Neutropenia With Haloperidol and Lithium: A Case Report  
*Michael Esang, MB.Ch.B., M.P.H.*

P4-014

New-Onset Depression Following the "Flu": A Case Report  
*Michael Esang, MB.Ch.B., M.P.H.*

P4-015

Vilazodone: A Promising Alternative for Patient With Depression in Chronic Kidney Disease (CKD)  
*Hiren Patel, M.D.*

P4-016

Effectiveness of Ketamine in Acute Suicidality in Psychiatric Patients  
*Safiullah Abro*

P4-017

Clinical Efficacy and Safety of Esketamine Nasal Spray in a U.S. Population of Geriatric Patients With Treatment-Resistant Depression  
*Lynn Starr*

P4-018

Clinical Response, Remission, and Safety of Flexibly Dosed Esketamine Nasal Spray in U.S. Geriatric Patients With Treatment-Resistant Depression  
*Lynn Starr*

P4-019

Clinical Response, Remission, and Safety of Flexibly Dosed Esketamine Nasal Spray in a U.S. Population of Patients With Treatment-Resistant Depression  
*May Shawi*

P4-020

Clinical Efficacy and Safety of Flexibly Dosed Esketamine Nasal Spray in a U.S. Population of Patients With Treatment-Resistant Depression  
*May Shawi*

P4-021

Limitations of Identifying Persistent Depressive Disorder in a Primary Care Setting  
*Carla Paola Avellan Herrera, M.D.*

P4-022

Association Between Financial Stress and Depression: A Systematic Review  
*Kunmi Sobowale, M.D.*

P4-023

EEG Gamma Synchronization Predicts Response to Paroxetine Treatment  
*Baris Metin*

P4-024

WITHDRAWN

P4-025

The Los Angeles County 911 Response to Mental Health and Substance Abuse Emergencies: Process Maps and Understanding the Pivotal Role of Dispatch  
*Isabella Morton, M.D., M.P.H.*

P4-026

Struggling, but Below Criteria: Subthreshold PTSD in 9/11 World Trade Center Responders  
*Connie Chen*

P4-027

Surfing the Dissociative Spectrum: Learning to Analyze Self-Cycling While Using Medications to Treat Mood Cycles  
*Jacob Elliott Sperber, M.D.*

P4-028

Healing Relationships for Diverse Psychiatric Populations  
*Selby C. Jacobs, M.D., M.P.H.*

P4-029

An Evaluation of Patient and Staff Perceptions of Care Quality Related to Therapeutic Programming on Stanford's Inpatient Behavioral Health Units  
*Alex Clarke, M.D.*

P4-030

Implementing the Collaborative Recovery Model in an Australian Tertiary Mental Health Service  
*Kevin Ong, M.B.B.S.*

P4-031

Ithuriel the Angel Prisoner  
*Lepri Assunta, M.D.*

P4-032

Adolescent Gun Violence: Preliminary Support for a Developmental Perspective  
*Spencer Keil*

P4-033

Community-Based Models of Care Which Decrease Criminal Justice System Involvement of Homeless People With Mental Health Disorders: A Review  
*Myriam Le Blanc, M.D., M.Sc.*

P4-034

An Involuntary Medication Review Process in a State Psychiatric Hospital: Patient and Process Characteristics  
*Lily Arora, M.D.*

P4-035

Relationship Between Restraint and Seclusion and Treatment Satisfaction in Child and Adolescent Psychiatric Inpatients  
*Jessica N. Tasca, B.A.*



# POSTER SESSION TOPIC INDEX

## **Academic Psychiatry**

---

P2-006, P2-007, P2-029, P2-031-P2-034, P4-016

## **Addiction Psychiatry**

---

P1-004, P2-001-P2-006

## **Administrative Psychiatry**

---

P2-002, P2-035, P2-036, P4-034

## **Anxiety Disorders**

---

P2-016, P3-023

## **Autism Spectrum Disorders**

---

P1-027, P1-028

## **Bipolar and Related Disorders**

---

P1-009, P2-015, P2-019, P2-020, P3-009

## **Child and Adolescent Psychiatry**

---

P1-008, P1-021, P1-024-P1-026, P2-011, P3-004, P4-001, P4-032, P4-035

## **Community Psychiatry**

---

P1-001-P1-014, P1-032, P2-026, P2-034, P3-006, P3-010, P3-033, P3-034, P3-036, P4-004, P4-021, P4-025, P4-033

## **Consultation-Liaison Psychiatry**

---

P2-004, P2-007

## **Depressive Disorders**

---

P3-011, P4-014-P4-023

## **Diagnosis/Assessment**

---

P1-017-P1-020, P1-028, P2-003, P2-009, P2-019, P2-037, P3-020, P4-026

## **Dissociative Disorders**

---

P4-027

## **Diversity and Health Equity**

---

P1-001, P1-006, P2-024, P3-001-P3-009, P3-019

## **Emergency Psychiatry**

---

P2-030, P4-025

## **Ethics**

---

P2-008, P2-037

## **Forensic Psychiatry**

---

P1-011, P3-036, P4-032-P4-034

## **Gender and Sexuality**

---

P1-002

## **Geriatric Psychiatry**

---

P1-029, P1-030, P2-036

## **Global, Political, and Social Issues**

---

P2-023-P2-026, P2-032, P2-033, P3-018

## **Integrated and Collaborative Care**

---

P1-003, P1-020, P3-007, P3-010-P3-015, P3-033, P4-012, P4-029

## **Military/Veterans and Their Families**

---

P1-014-P1-016, P3-027

## **Neurocognitive Disorders**

---

P4-011

## **Neuropsychiatry**

---

P2-008-P2-010

## **Neuroscience and Genetics**

---

P2-011, P2-012, P4-013

## **Obsessive-Compulsive and Related Disorders**

---

P2-021

# POSTER SESSION TOPIC INDEX

## **Personality Disorders**

---

P1-018, P2-018

## **Physician Well-Being and Burnout**

---

P3-017

## **Practice Management**

---

P3-017, P4-015

## **Prevention**

---

P1-005, P1-024, P1-025, P2-005, P3-025, P3-026

## **Psychiatric Rehabilitation and Recovery**

---

P1-007, P1-013, P3-001, P4-028-P4-031

## **Psychoanalysis**

---

P2-018

## **Psychopharmacology**

---

P1-019, P2-014, P2-015, P4-008, P4-023

## **Psychotherapy**

---

P4-006, P4-028

## **Quality and Outcome Studies**

---

P2-020, P2-027-P2-030, P2-035, P3-015,  
P3-028, P4-010, P4-030

## **Religion and Spirituality Psychiatry**

---

P1-032

## **Residents, Fellows, and Medical Students**

---

P1-012, P2-021, P3-003, P3-005, P3-018,  
P3-019, P3-035 P4-009

## **Schizophrenia Spectrum and Other Psychotic Disorders**

---

P1-029, P1-030, P2-010, P2-012, P2-014, P3-012,  
P4-001-P4-010, P4-012, P4-013

## **Somatic Symptom Disorders**

---

P2-022

## **Suicide and Risk Evaluation**

---

P2-031, P3-023, P3-024, P4-005, P4-007

## **Technology (EHR, Telepsychiatry, Apps)**

---

P2-001, P3-014, P3-024, P3-027-P3-031

## **Trauma- and Stressor-Related Disorders**

---

P1-015, P1-016, P4-026, P4-027

## **Treatment (other non-pharmacological)**

---

P3-025, P3-029, P3-030, P3-032, P4-031

## **Wellness**

---

P3-020-P3-022, P3-034

## **Women's Health**

---

P3-026, P3-031

# Allied Professional Meetings

Time	Meeting	Room	Contact Person
<b>Wednesday, October 3</b>			
1:00 p.m.	7:00 p.m.	American Association of Community Psychiatrists Board Meeting	Spire Parlor, Sixth Floor Frances Bell
<b>Thursday, October 4</b>			
8:00 a.m.	Noon	American Association of Community Psychiatrists Board Meeting	Spire Parlor, Sixth Floor Frances Bell
<b>Friday, October 5</b>			
5:00 p.m.	7:00 p.m.	American Association of Community Psychiatrists Membership Forum	Red Lacquer, Fourth Floor Frances Bell
7:00 p.m.	9:00 p.m.	American Association of Community Psychiatrists Membership Reception for All Attendees	Pritzker Military Museum & Library 104 S. Michigan Avenue Second Floor Frances Bell
<b>Saturday, October 6</b>			
Noon	5:30 p.m.	National Council Medical Director Institute	Kimball, Third Floor Joe Parks, M.D.
9:00 a.m.	1:00 p.m.	AGLP: The Association of LGBTQ Psychiatrists Annual Business Meeting	Indiana, Third Floor Roy Harker

# APA Component Meetings

Time		Meeting	Room	Contact Person
<b>Thursday, October 4</b>				
8:00 a.m.	11:00 a.m.	APA/APAF Public Psychiatry Fellowship	Price, Fifth Floor	Patrick Odai-Afotey
11:45 a.m.	12:45 p.m.	IPS Scientific Program Committee Meeting	Chicago, Fifth Floor	Leon Lewis
Noon	1:30 p.m.	Medical Student Lunch	Price, Fifth Floor	Vabren Watts
Noon	2:00 p.m.	Caucus of Religion, Spirituality and Psychiatry	Kimball Third Floor	Sejal Patel
5:00 p.m.	6:30 p.m.	Public Psychiatry Directors	Chicago, Fifth Floor	Sejal Patel
<b>Friday, October 5</b>				
11:00 a.m.	1:30 p.m.	APA/APAF Public Psychiatry Fellowship	Price, Fifth Floor	Patrick Odai-Afotey
Noon	2:00 p.m.	Caucus of Psychiatrists treating Intellectual Disability	Harvard, Third Floor	Sejal Patel
5:30 p.m.	6:30 p.m.	Caucus of Hispanic Psychiatrists	Adams, Sixth Floor	Vabren Watts
6:00 p.m.	8:00 p.m.	Caucus of Black Psychiatrists	Chicago, Fifth Floor	Vabren Watts
<b>Saturday, October 6</b>				
8:00 a.m.	10:00 a.m.	National Minority Mentors Breakfast	Kimball, Third Floor	Vabren Watts
8:00 a.m.	11:00 a.m.	APA Public Psychiatry Fellowship	Price, Fifth Floor	Patrick Odai-Afotey
11:45 a.m.	12:45 p.m.	2019 IPS Scientific Program Committee Planning Meeting	Adams, Sixth Floor	Leon Lewis

# Exhibit Hall and Networking Opportunities

Don't miss the opportunity to see the newest products and latest developments in treatment technologies, the IPS Exhibition is a must see!

Meet up with colleagues in the Connection Lounge, enjoy refreshments as you mingle with the exhibitors, and take advantage of free Wi-Fi and charging stations in the Connection Lounge

## Exhibit Days and Times

**Thursday, October 4** 3:30 p.m. – 5:30 p.m.

**Friday, October 5** 10:30 a.m. – 5:00 p.m.

**Saturday, October 6** 10:30 a.m. – 12:30 p.m.

What better way to connect with the exhibitors and your colleagues than over a bite to eat! Join us in the exhibit hall for these networking events:

### Thursday, October 4

Welcome Reception 3:30 p.m. – 5:30 p.m.

### Friday, October 5

Dine & Discover 11:30 a.m. – 1:00 p.m.

Nibble & Network 3:30p.m. – 5:00p.m.

### Saturday, October 6

Munch & Mingle 11:00 a.m. – 12:30 p.m.

A prize drawing will take place on Saturday, October 6; make sure to visit each exhibitor to obtain a raffle ticket to enter into the drawing for your chance to win! **You must be present to win.**

Raffle tickets are distributed at the discretion of the individual exhibitor.

# The American Psychiatric Association Foundation

We believe in a mentally healthy nation for all.



Our programs recognize and promote the importance of mental health – where you live, learn, work and worship.

Learn more at our booth in the exhibit hall and at [apafdn.org](http://apafdn.org)



# EXHIBITOR LISTINGS Product/Service Category

## Association/Nonprofit **Booth #**

American Board of Psychiatry and Neurology, Inc. . . . 310

## Behavioral Healthcare

Rogers Behavioral Health . . . . . 209

Integrated Psychiatric Consultants, P.A. . . . . 214

Treatment Placement Specialists, an initiative of Acadia Healthcare. . . . . 304

## Correctional Mental Health

Los Angeles County Department of Health Services . . 212

## Healthcare

California Correctional Health Care Services . . . . . 200

## Hospital

CareMore . . . . . 113

Carle Physician Group . . . . . 207

Rush University Medical Center . . . . . 305

## Insurance

American Professional Agency, Inc . . . . . 204

## Internet Marketing

MDocHaus . . . . . 300

## Locum Tenens

LocumTenens.com . . . . . 201

Quest Healthcare Solutions . . . . . 109

## Pharmaceutical Product **Booth #**

Galen US . . . . . 311

Indivior Inc. . . . . 208

Sunovion Pharmaceuticals Inc. . . . . 203

## Psychiatric Facility

Northwestern University Feinberg School of Medicine . . . . . 307

Pine Rest Christian Mental Health Services . . . . . 114

## Recruitment **Booth #**

Genoa Healthcare . . . . . 211

Los Angeles County Department of Mental Health . . . 302

Provider Solutions + Development. . . . . 202

UCSF and County of Fresno DBH. . . . . 216

Wexford Health Sources, Inc . . . . . 210

## State/Federal

Central Intelligence Agency . . . . . 111

## Substance Abuse

Rosecrance Health Network . . . . . 115

## Telehealth

Healthpiper . . . . . 110

Regroup . . . . . 306

## EXHIBITOR LISTINGS Product/Service Description

### **American Academy of Addiction Psychiatry**

#### **Booth #310**

400 Massasoit Ave, Suite 307  
East Providence, RI 02914  
[www.aaap.org](http://www.aaap.org)

The American Academy of Addiction Psychiatry (AAAP) is a professional membership organization for learning and sharing about the art and science of Addiction Psychiatry research and clinical treatment.

### **American Board of Psychiatry and Neurology, Inc.**

#### **Booth #117**

7 Parkway North  
Deerfield, IL 60015  
[www.abpn.com](http://www.abpn.com)

The American Board of Psychiatry and Neurology serves the public interest and the professions of psychiatry and neurology by promoting excellence in practice through its certification and maintenance of certification processes.

### **American Professional Agency, Inc.**

#### **Booth #204**

95 Broadway  
Amityville, NY 11701  
[www.apamalpractice.com](http://www.apamalpractice.com)

Our company is a leading provider of psychiatrists medical professional liability insurance and we offer the only program endorsed by the American Psychiatric Association and sponsored by AACAP. Our policyholders receive comprehensive protection, exceptional risk management support services which insurance a daily, 24-hour in the event of an emergency, many discounts and very competitive rates.

### **California Correctional Health Care Services**

#### **Booth #200**

8280 Longleaf Drive, Building D WDU  
Elk Grove, CA 95758  
[www.cchcs.ca.gov](http://www.cchcs.ca.gov)

With 35 locations throughout California and a multidisciplinary approach to mental health care, CCHCS is an ideal place to begin, or continue your career. You will join a team well-versed in the intricate psychiatric and medical interplay necessary to treat our unique patient population. In return, you will receive a competitive salary and all of the benefits and security of state employment.

### **CareMore**

#### **Booth #113**

12898 Towne Center Drive  
Cerritos, CA 90703  
[www.caremore.com](http://www.caremore.com)

CareMore, an Anthem Inc. family of companies, is a national leading delivery system with operations in ten states. Our system focuses on frail elders and other vulnerable populations (Medicaid/dual-eligibles). In most markets we are the payer and provider allowing us to pursue thoughtful innovation of our clinical model. We are actively hiring a Director of Psychiatry, psychiatrists, primary care providers and nurse practitioners.

### **Carle Physician Group**

#### **Booth #207**

611 W. Park Street  
Urbana, IL 61801  
[www.carleconnect.com](http://www.carleconnect.com)

Based in Urbana, Illinois, Carle is a vertically-integrated health system serving a patient population of more than 1.3 million in 14 communities across east central Illinois. Carle Physician Group includes more than 500 doctors in 80 specialties and Carle Foundation Hospital, a nationally recognized 413-bed regional hospital, is home to the area's only Level I Trauma Center and Level III perinatal services.

### **Central Intelligence Agency**

#### **Booth #111**

Recruitment Center  
Washington, DC 20505  
[www.cia.gov](http://www.cia.gov)

The CIA is the premier agency responsible for providing global intelligence on the ever-changing political, social, economic, technological and military environment. Here, your paramount goal and mission will be to protect the national security of the United States. Virtually any job you can imagine is available at the CIA — plus, some you can't even imagine.



## EXHIBITOR LISTINGS Product/Service Description

### California Correctional Health Care Services

#### Booth #200

8280 Longleaf Drive, Building D WDU  
Elk Grove, CA 95758  
[www.cchcs.ca.gov](http://www.cchcs.ca.gov)

With 35 locations throughout California and a multidisciplinary approach to mental health care, CCHCS is an ideal place to begin, or continue your career. You will join a team well-versed in the intricate psychiatric and medical interplay necessary to treat our unique patient population. In return, you will receive a competitive salary and all of the benefits and security of state employment.

### Deerfield Behavioral Health of Warren, LLC

#### Booth #312

514 West Third Avenue  
Warren, PA 16365  
[www.deerfieldbehavioralhealth.org](http://www.deerfieldbehavioralhealth.org)

Deerfield Behavioral Health of Warren is a unique group medical practice providing a range of services to diverse audiences. Psychiatrists and nursing professionals serve individuals, social service agencies and other health organizations on a direct or contracted basis, including medical offices, outpatient clinics, inpatient/skilled nursing facilities and substance abuse services. DBHW also offers telepsychiatry services, easing the challenges of rural psychiatry in Pennsylvania and elsewhere.

### Galen US

#### Booth #311

2661 Audubon Road  
Audubon, PA 19403  
[www.galen-pharma.com](http://www.galen-pharma.com)

Galen is a recognized Specialty Pharmaceutical Company marketing products throughout the UK, Ireland, Europe and the U.S. in therapy areas such as gastroenterology, psychiatry, female health and pain management. By combining innovation in product development with competitive pricing, Galen aims to work in partnership with healthcare professionals and patients to create real, long-term value, a major factor in the company's success to date.

### Genoa Healthcare

#### Booth #211

475 Park Avenue South, Floor 11  
New York, NY 10016  
[www.genoatelepsychiatry.com](http://www.genoatelepsychiatry.com)

Genoa Healthcare is the nation's largest provider of outpatient telepsychiatry. We specialize in behavioral health services and build sustainable telepsychiatry programs with compassionate and skilled providers. Genoa Healthcare providers use our video conferencing platform to connect with underserved populations, modernize care delivery and make a difference in the lives of our clients, all without having to leave home.

### Healthpiper

#### Booth #110

921 Westwood Boulevard, Suite 201  
Los Angeles, CA 90024  
[www.healthpiper.com](http://www.healthpiper.com)

Healthpiper provides psychopharmacology treatment built upon our mobile app, which lets our psychiatrists serve patients much more conveniently and seamlessly than conventional care. Our clients are thriving and grateful, and the transparent and effective care we provide makes one proud to be a psychiatrist. We are growing rapidly, and our full-time psychiatrists earn \$400,000 a year. Part-time also available. Wanted: wonderful psychiatrists!

### Indivior Inc.

#### Booth #208

10710 Midlothian Tpk, Suite 430  
North Chesterfield, VA 23235  
[www.indivior.com](http://www.indivior.com)

Indivior Inc. is a global specialty pharmaceutical company at the forefront of providing educational resources and treatment options to physicians and patients dealing with opioid dependence.

## EXHIBITOR LISTINGS Product/Service Description

### **Integrated Psychiatric Consultants, P.A. Booth #214**

15316 Perry Street  
Overland Park, KS 66221  
www.integrated-pc.com

Integrated Psychiatric Consultants (IPC) is a physician owned and operated group psychiatric practice that has a wide spectrum of opportunities for psychiatrists and psychiatric nurse practitioners. These include full-time, part-time and PRN opportunities in inpatient, outpatient, residential and tele-psychiatry. Services are provided in the states of Kansas and Missouri. Visit our website for more information.

### **LocumTenens.com Booth #201**

2655 Northwinds Parkway  
Alpharetta, GA 30009  
www.locumtenes.com

LocumTenens.com is a full-service recruiting and staffing agency with a focus in psychiatry. For more than a decade we have placed thousands of locum psychiatrists in assignments across the nation, in both inpatient and outpatient settings. Contact us today and tell us what you're looking for.

We specialize in staffing for the following areas:  
Adult Psychiatry, Child Psychiatry, Forensic Psychiatry, Geriatric Psychiatry, Telepsychiatry.

### **Los Angeles County Department of Health Services Booth #212**

555 Ferguson Drive #220-10  
Commerce, CA 90022  
www.dhs.lacounty.gov

The Los Angeles County Department of Health Services (DHS) is the second largest municipal health system in the nation. DHS annually cares for about 600,000 patients and employs over 22,000 staff. DHS provides medical/mental health services to correctional facilities throughout Los Angeles County. We are actively recruiting mental health psychiatrists to provide quality services to incarcerated individuals. Visit our exhibit to learn about this rewarding opportunity!

### **Los Angeles County Department of Mental Health Booth #302**

550 South Vermont Avenue  
Los Angeles, CA 90020  
www.psychiatristjobs.la

Please visit the Los Angeles County Department of Mental Health exhibit for more information about products and services that will be of interest to you.

### **MDoChaus Booth #300**

485 Massachusetts Avenue  
Cambridge, MA 02139  
www.MDoChaus.com

MDoChaus is the first social network to exclusively serve the medical field. Currently in the business funding stages, MDoChaus already has multiple backing medical society partners.

### **Northwestern University Feinberg School of Medicine Booth #307**

446 E. Ontario Street, Suite 7-200  
Chicago, IL 60611  
www.psychiatry.northwestern.edu

The Department of Psychiatry and Behavioral Sciences of Northwestern University Feinberg School of Medicine offers a wide array of exceptional educational and research programs aimed at teaching future generations of psychiatrists and psychologists; improving the diagnosis and treatment of patients with psychiatric disorders; and advancing our understanding of the biopsychosocial origins of these disorders.

### **Pine Rest Christian Mental Health Services Booth #114**

300 68th Street, SE  
Grand Rapids, MI 49548  
www.pinerest.org

Pine Rest is looking for psychiatrists. Pine Rest is a nonprofit organization founded in 1910, and is the leading behavioral health system in the region offering full continuum of care for all ages. As a Department of Psychiatry with Michigan State University's College of Human Medicine, there is faculty appointment, residency and fellowship training programs, and research. Pine Rest offers diverse psychiatric career opportunities - One Employer, Endless Opportunities.

## EXHIBITOR LISTINGS Product/Service Description

### Provider Solutions + Development

#### Booth #202

800 5<sup>th</sup> Avenue, Suite 700  
Seattle, WA 98104  
psdrecruit.org

Founded within Providence St. Joseph Health, Provider Solutions + Development is a not-for-profit clinical career navigation organization. For over 20 years, we have helped thousands of physicians and providers achieve their practice potential. Our growing network of health system partners offers innovative care models, diverse practice locations across the nation and a shared culture of service.

### Quest Healthcare Solutions

#### Booth #109

6 Concourse Parkway, Suite 2250  
Atlanta, GA 30328  
www.quesths.com

Quest Healthcare Solutions, one of the nation's fastest-growing locums firms, now specializes in psychiatric staffing. With decades of combined experience, Quest recruiters are committed to matching you with exciting and challenging opportunities nationwide based on your career goals. We are dedicated to serving as your advocate throughout the locums search process.

### Regroup

#### Booth #306

4525 North Ravenswood  
Suite 201, Chicago IL 60640  
www.regrouptelehealth.com

Regroup operates at the intersection of technology and healthcare. This multi-award winning organization provides telemedicine, specifically telepsychiatry and teletherapy services, across the U.S. to healthcare entities experiencing clinician shortages and/or seeking a more flexible approach to behavioral healthcare delivery.

### Rogers Behavioral Health

#### Booth #209

34700 Valley Road  
Oconomowoc, WI 53066  
www.rogersbh.org

Rogers Behavioral Health (RBH) is a nationwide leader in comprehensive and effective behavioral healthcare treatment for children, teens, and adults. Patients at RBH are treated for OCD/Anxiety, PTSD, Mood Disorders, Eating Disorders, and Addiction at one of four levels of care: Inpatient, Residential, PHP, or IOP. Offices are located in California, Florida, Illinois, Minnesota, Pennsylvania, Tennessee, and Wisconsin. [www.rogersbh.org](http://www.rogersbh.org)

### Rosecrance Health Network

#### Booth #15

1021 North Mulford Road  
Rockford, IL 61107  
www.rosecrance.org

Rosecrance is recognized as a leading provider of services for people with substance use and mental health disorders. We currently offer services at more than 45 sites across Illinois, Chicagoland, Southern Wisconsin and the Quad Cities. Rosecrance served more than 30,000 children, teens, adults and families in the past year. To learn more about Rosecrance and view our facilities, visit [rosecrance.org](http://rosecrance.org)

### Rush University Medical Center

#### Booth #305

1725 West Harrison Street, Suite 964  
Chicago, IL 60612  
www.joinrush.org

Rush is an academic health system whose mission is to improve the health of the people and the diverse communities it serves through the integration of outstanding patient care, education, research and community partnerships. The Rush system comprises Rush University Medical Center, Rush University, Rush Copley Medical Center and Rush Oak Park Hospital, as well as numerous outpatient care facilities.

## EXHIBITOR LISTINGS Product/Service Description

### **Sunovion Pharmaceuticals Inc.**

#### **Booth #203**

84 Waterford Drive  
Marlborough, MA 01752  
[www.sunovion.com](http://www.sunovion.com)

Sunovion is a global biopharmaceutical company focused on the innovative application of science and medicine to help people with serious medical conditions. With patients at the center of everything it does, Sunovion has an unwavering commitment to support people with psychiatric, neurological and respiratory conditions. Visit us at [www.sunovion.com](http://www.sunovion.com).

### **Treatment Placement Specialists, an initiative of Acadia Healthcare**

#### **Booth #304**

6100 Tower Circle 1000  
Franklin, TN 37067  
[www.treatmentplacementspecialists.com](http://www.treatmentplacementspecialists.com)

Partnering with local behavioral health professionals as a free resource, Treatment Placement Specialists® provide informed, vetted treatment options and guidance based on client need. We work with a vast network of facilities, both inside and outside of Acadia who offer treatment for primary mental health concerns, substance abuse, and other behavioral health issues.

### **UCSF and County of Fresno DBH**

#### **Booth #216**

2625 E. Divisadero Street  
Fresno, CA 93721  
[www.fresno.ucsf.edu](http://www.fresno.ucsf.edu)

The University of California San Francisco Fresno Medical Education Program (UCSF Fresno), Central California Faculty Medical Group (CCFMG) and Community Regional Medical Center (CRMC) are seeking candidates for full- or part-time faculty positions in general adult psychiatry. We are recruiting for hospital and outpatient positions working with CRMC, the Fresno County Department of Behavioral Health and/or the faculty practice site. Please see our website.

### **Wexford Health Sources, Inc.**

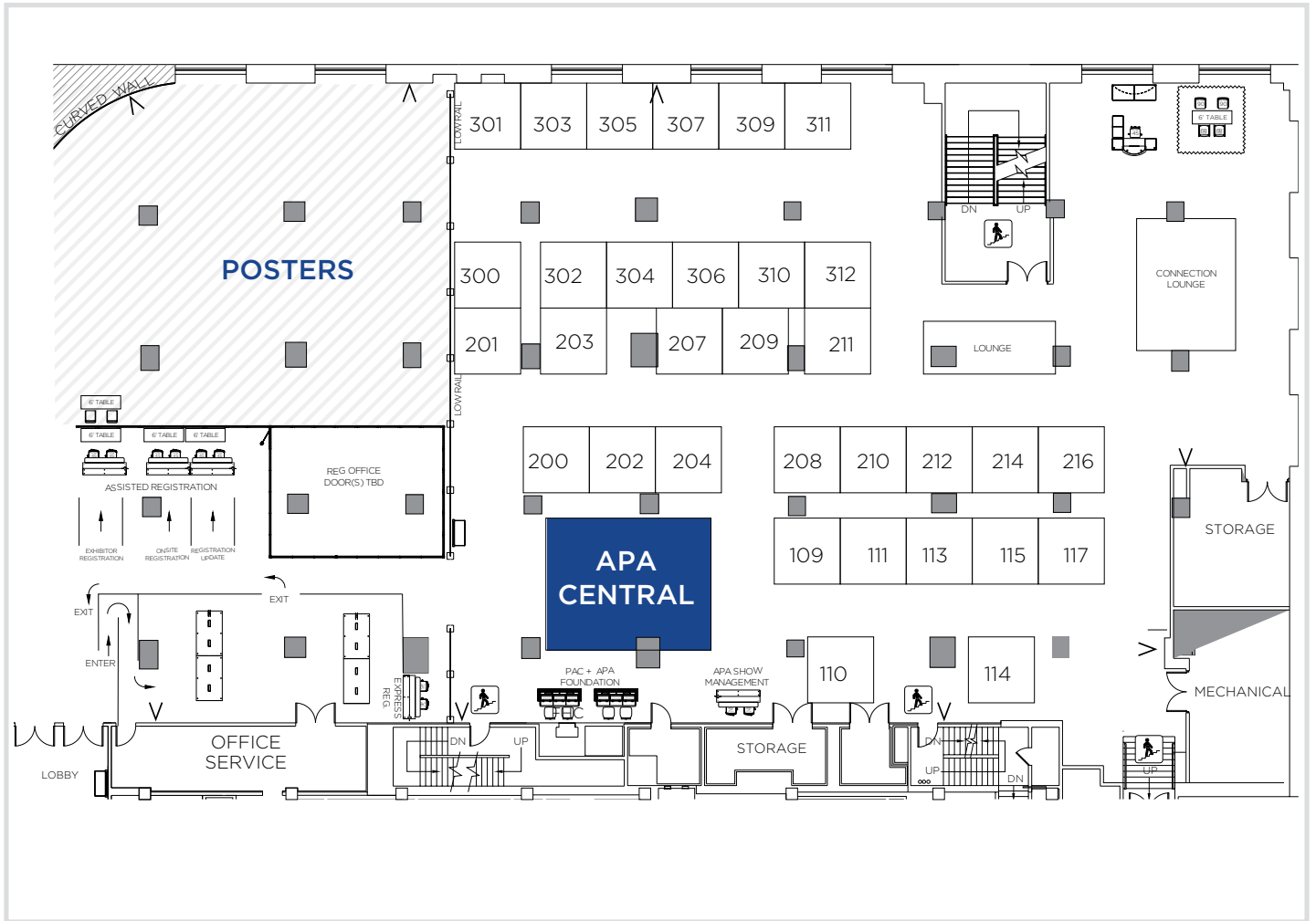
#### **Booth #210**

501 Holiday Drive, Foster Plaza 4  
Pittsburgh, PA 15220  
[www.wexfordhealth.com](http://www.wexfordhealth.com)

Wexford Health Sources, one of the nations leading innovative correctional health care company, provides clients with experienced management and technologically advanced services, combined with programs that control costs while ensuring quality.

For the past two decades, Wexford Health has consistently delivered proven staffing expertise and a full range of medical, behavioral health, pharmacy, utilization management, provider contracting, claims processing, and quality management services.

# Exhibit Hall Map



# JobCentral

## The Career Hub for Psychiatry



### Manage Your Career

- Browse hundreds of active job listings!
- Create an account to save jobs, store multiple resumes and cover letters and communicate with employers through our internal messaging system.
- Set up multiple job alerts specifying your skills, interests and location to receive e-mails when employers post jobs that match your criteria.

### Recruit for Open Positions

- Post your job in front of thousands of highly qualified psychiatrists.
- Cross promote your job listing in *Psychiatric News*.
- Search the anonymous resume database to find your ideal candidate.

AMERICAN  
PSYCHIATRIC  
ASSOCIATION



**JOBCENTRAL**  
The Career Hub for Psychiatry

[jobs.psychiatry.org](http://jobs.psychiatry.org)

AH1838A



AMERICAN  
**PSYCHIATRIC**  
ASSOCIATION